

OPTONICA

USER MANUAL - LED FAN CEILING

SKU: 19101



2. Packaging Details



Fan light body



blade

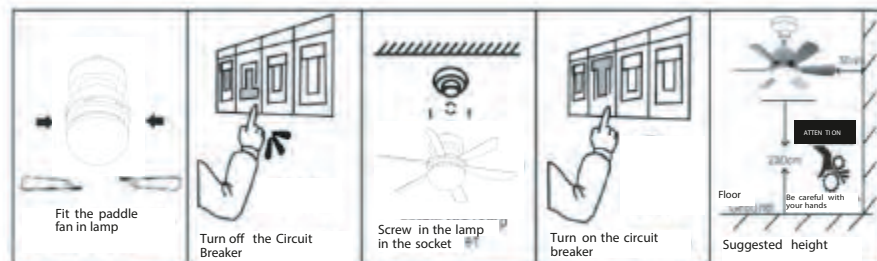


Remote control

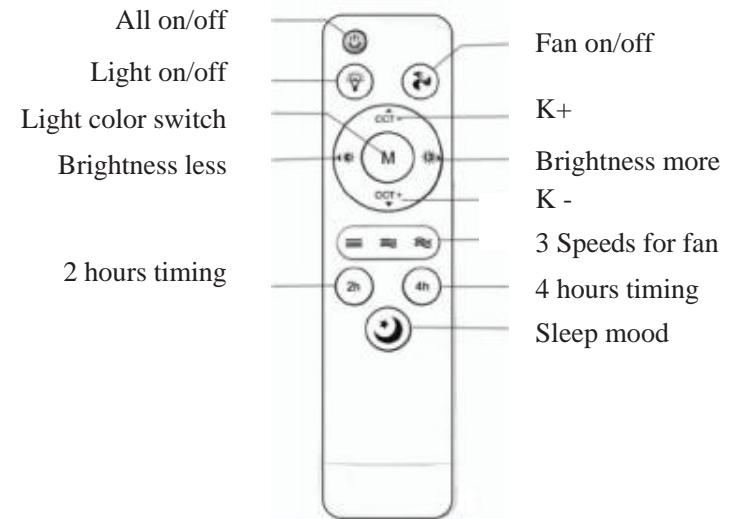


User manual

3. Installation



4. Remote Control Function



*When the fan light is turned off with the remote control, it will remember the previous settings. The fan light will resume lighting and fan speed when it is turned on again.

*Do not use on pendants.

5. Care

1. Insert the fan blades firmly into the grooves on the lamp body before installing the lamp into the holder;
2. Do not touch the fan light while it is running to avoid possible injuries, even if it has an emergency stop function;
3. Install and keep the light out of the reach of children to avoid possible injuries;
4. Be careful when approaching the light when it is on;
5. Fan blades are removable for easy cleaning and storage. Take care when removing them to avoid possible damage;
6. The product is not waterproof, do not use it in high humidity environments;
7. Do not use with a dimmer;