

OPTONICA

USER MANUAL

SKU: 7221

When using electrical equipment, basic safety precautions should always be followed including the following:



PARAMETERES

Power: 3W
Lumens: 150LM
Battery V/Ah: 3.7V 1800MAH
Light Color: 6000K
Beam angle: 180°
Size of product: 305x55x202mm
Material: ABS

READ ALL SAFETY INSTRUCTIONS

1. Do not use outdoors
2. Do not mouth near gas or electric heaters
3. Do not let power cords touch hot surfaces
4. Equipment should be mounted in locations and at heights where it will not, readily be subjected to tampering by unauthorized persons
5. Equipment accessories not recommended by Manufacturer may cause an unsafe.

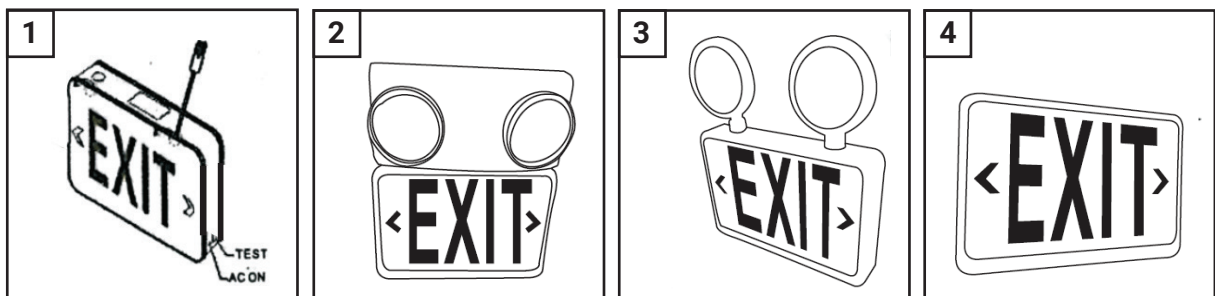
CAUTIONS

1. Turn on the AC power supply and the red light will be on
2. Test button under the charging status, can make the test for equipment is workable or not, press the test button is blackout, loosen the button for charging status
3. When the power failed, emergency light light up automatically, emergency time more than 3 hours
4. Battery keeps for a long time, which will affect its service life. It's suggested to be charged discharged every three months at one time. If in normal useage, it shall be carried out every six mouths a discharge operation. When the rated discharge time is less than 50% please replace it and note that is negative installed correctly and its capacity.

CEILING MOUNTING

1. Open the luminaire cover and pry off the small cover at the top or side.
2. Knockout in top of mounting plate and push wires through the hole.
3. The light adopts a voltage AC85-265V, which is suitable for global general voltage, so the connecting wire can be directly connected to the power supply.
4. Snap fixture onto mounting plate and ensure no wires are pinched. Make sure unit is fully attached.
5. Restore power and press test button. Battery powered LED will come on, AC light will turn off.

INSTALLATION DIAGRAM



Green for charging state, full of electricity into red.
Turn on the AC power supply and the red light will be on.