

iCON
BESS for C&I All-in-One Cabinet
SU215E100LM



**New
2024**

Highlights

- 100kW converter and 215kWh battery
- Flexible layout up to 5 cabinets in parallel
- Turnkey solution with PCS and batteries in one cabinet

System Features



Plug-and-Play



No external PCS



No BCP needed



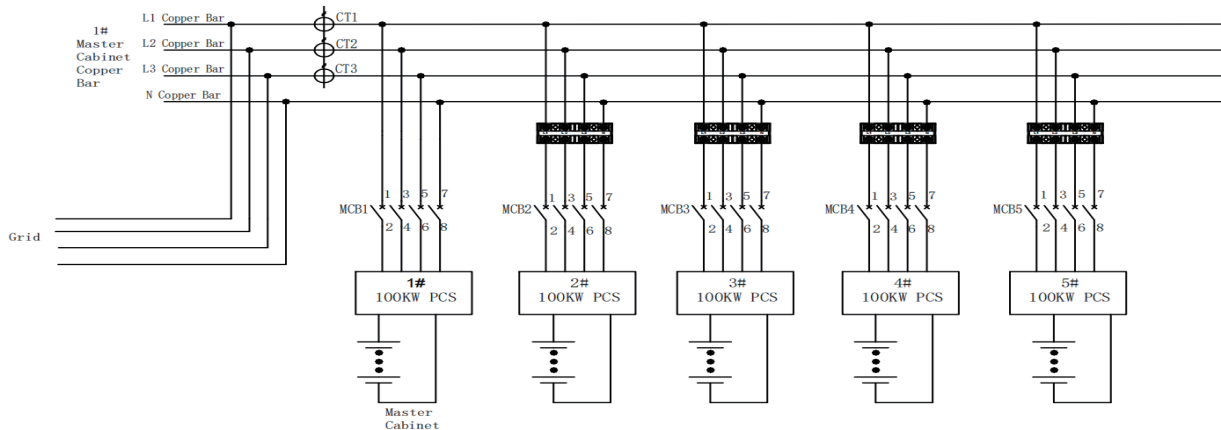
Liquid-cooled



Up to 5 cabinets



Flexible layout



System Model	SU215E100LM
System Information	
Nominal Power	100kW
Nameplate Capacity	215kWh
Battery Information	
Battery Chemistry	LFP
Capacity	280Ah
Configuration	240S1P
Nominal Voltage	768V
Voltage Range	672~864V
Charge and Discharge Rate	≤0.5
Depth of Discharge	98%
PCS Information	
Nominal Power	100kVA
Operating Mode	Support Grid-Connected & Off-Grid Operation
Nominal Grid / Islanding Voltage	400Vac
Power Factor	-1 to 1
Nominal Grid Frequency	50Hz
Isolation	No Isolation
Connection Method	3P4L
Working Conditions	
Degree of Protection	IP55
Noise Emission	≤75dB @1M
Operating Temperature Range	-25°C~45°C
Relative Humidity	0~95% (Non-Condensing)
Max.Working Altitude	3000m
System Information	
Dimensions(W×H×D)	1000×2500×1350mm
Weight	2500kg
Cooling	Intelligent Liquid Cooling
PCS Cooling	Forced Air Cooling
Fire Suppression System	Aerosol+Water
Communication Protocol	CAN/485
Certification	UL1973, UL9540A, IEC62619, IEC61000, GB/T36276, 62933

iCON
BESS for C&I