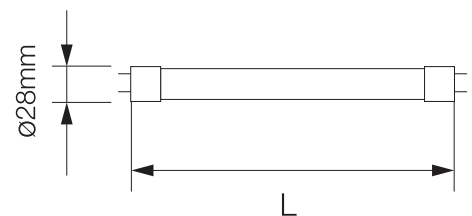


### LED TUBE T8

### NANO PLASTIC



25 000h



Not Dimmable



Protection Class



High Lumen

SKU No.	W	lm	K	Ra	PF	Ø	L
15541,15542	9	1260	6000/4000				600mm
15544,15545	18	2520	6000/4000	>80	>0.9	28mm	1200mm
15547,15548	22	3080	6000/4000				1500mm



Not suitable to be used in emergency luminaires designed for double-capped fluorescent lamp(s).



Light distribution



Suitable for 220-240V 50-60Hz operation



Temperature



The old starter need to be replaced



Warranty

#### Safety:

Before carrying out any work on electrical system, turn-off the mains power supply.

The tubes should be installed only when the mains power supply is off and by qualified and authorized personnel.

Do not touch the tube while it is on or immediately after it is turned off. Allow to cool before touching the tube.

Do not cover the tube with paper, cloth or other material.

Keep the tube away from sources of ignition.

Ensure that the tube is fitten correctly and firmly.

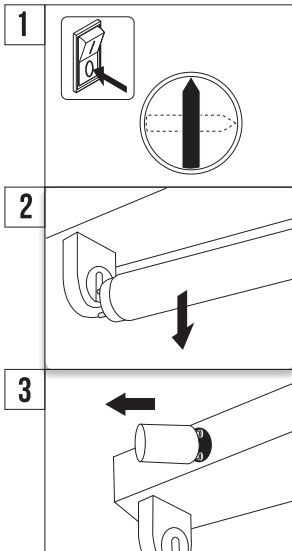
Do not touch the inside of the tube with liquid.

Do not stare directly at the tube, in order to prevent light from damaging the eyes.

**The supplied starter is s fake starter, and should only be used with the LED tube light.**

# OPTONICA

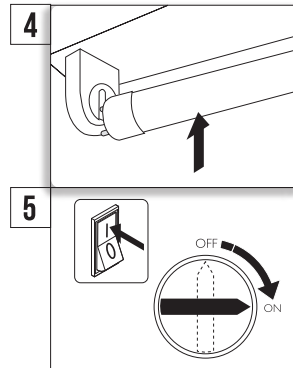
## Installation:



Swich of electricity

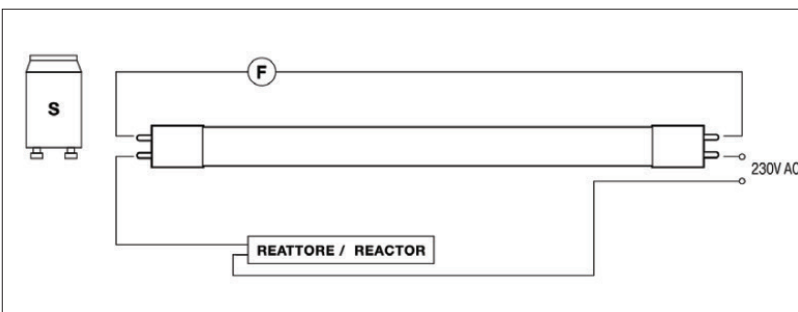
Remove all  
fluorescent lamps

Remove the starter  
and install  
the supplid one



Insert the LED Tube  
lamp into  
the lampholder

Swich on  
electricity



Remove the starter (S) and replace it with the one provided (F). To optomize energy consumption is recomended the removal of any capacitor.

**IT** **INFORMAZIONE AGLI UTENTI:** in attuazione delle **Directive 2002/95/CE, 2002/96/CE e 2003/108/CE**, relative alla riduzione dell'uso di sostanze pericolose nelle apparecchiature elettriche ed elettroniche, nonché allo smaltimento dei rifiuti. Il simbolo del cassonetto barrato riportato sull'apparecchiatura o sulla confezione indica che il prodotto alla fine della propria vita utile deve essere raccolto separatamente dagli altri rifiuti. La raccolta differenziata delle presente apparecchiatura giunta a fine vita è organizzata e gestita dal produttore. L'utente che vorrà distarsi dalla presente apparecchiatura dovrà quindi contattare il produttore e seguire il sistema che questo ha adottato per consentire la raccolta separata dell'apparecchiatura giunta a fine vita. L'adeguata raccolta differenziata per l'avvio successivo dell'apparecchiatura dismessa al riciclaggio, al trattamento e allo smaltimento ambientale compatibile contribuisce ad evitare possibili effetti negativi sull'ambiente e sulla salute e favorisce il riempiego e/o riciclo dei materiali di cui è composta l'apparecchiatura. Lo smaltimento abusivo del prodotto da parte del detentore comporta l'applicazione delle sanzioni previste dalla normativa vigente.

**GB** **INFORMATION FOR USERS:** in compliance with **Directives 2002/95/EC, 2002/96/EC and 2003/108/EC** concerning the reductions in use of hazardous substances in electrical and electronic appliances, as well as waste disposal. The symbol shown above, if placed on the product or on its packaging, indicates that the product must be collected separately from other waste at the end of its life cycle. Separate collection of this appliance at the end of its life cycle is organized and managed by the manufacturer and follow the established procedure implemented by the manufacturer to allow separate collection of the appliance that has reached the end of its life cycle. Proper separate collection for the purpose or orwarding the decommissioned appliance to environmentally friendly recycling, treatment and disposal aids in avoiding possible negative effects on the environment and health, and favours re-use and/or re-cycling of the materials that comprise the appliance. Abusive disposal of the product by the holder will result in the applications of administrative sanctions as set forth be current standards.

**FR** **INFORMATION AUX UTILISATEURS:** application des **Directives 2002/95/CE, 2002/96/CE et 2003/108/CE** relatives à la limitation de l'utilisation de substances dangereuses dans les équipements électriques et électroniques et à l'élimination des déchets. Le symbole de la poubelle barrée apposé sur les équipements ou sur l'emballage indique qu'à la fin de la durée de vie du produit, il devra être éliminé séparément des autres déchets ménagers. La collecte différenciée de l'appareil usagé est organisée et gérée par le fabricant. L'utilisateur souhaitant se libérer de cet appareil devra donc contacter le fabricant et suivre le système adopté par celui-ci, afin de permettre la collecte séparée de l'appareil usagé. Le tri et la collecte séparée de l'appareil usagé vers le recyclage, le traitement et l'élimination compatible avec l'environnement contribue à éviter les effets néfastes sur l'environnement et la santé humaine, et favorise la réutilisation et/ou le recyclage des composants de l'appareil. L'élimination non conforme du produit de la part de l'utilisateur comporte l'application des sanctions administratives prévues par les normes en vigueur.

**DE** **VERBRAUCHERINFORMATION:** zur Anwendung der **Richtlinien 2002/95/EG, 2002/96/EG und 2003/108/EG**, bezüglich der Reduzierung des Einsatzes gefährlicher Substanzen in elektrischen und elektronischen Geräten, sowie der Abfallbeseitigung. Das Symbol der durchgestrichenen Mülltonne auf dem Gerät, bedeutet dass dieses Produkt, wenn es unbrauchbar geworden ist, getrennt vom übrigen Müll entsorgt werden muss. Die getrennte Entsorgung dieses nicht mehr brauchbaren Gerätes entledigen möchte, sollte daher den Hersteller kontaktieren und dem vom Hersteller eingerichteten System für die getrennte Verwertung des nicht mehr brauchbaren Gerätes folgen. Die geeignete getrennte Müllabfuhr für die Einleitung der nachfolgenden Wiederverwertung des unbrauchbaren Gerätes, sowie die Behandlung und umweltfreundliche Entsorgung tragen dazu bei, mögliche negative Auswirkungen auf die Umwelt und die Gesundheit zu vermeiden und unterstützen die Wiederverwendung und/oder das Recycling der Materialien aus denen sich das Gerät zusammensetzt. Die unzulässige Beseitigung des Produktes durch den Eigentümer führt zur Anwendung der Strafmaßnahmen, die von der gültigen Norm vorgesehen sind.

**ES** **INFORMACION PARA LOS USUARIOS:** relacionada con las **Directivas 2002/95/CE, 2002/96/CE y 2003/108/CE**, correspondientes a la reducción del uso de sustancias peligrosas en aparatos eléctricos y electrónicos y al desecho de sus desperdicios. El símbolo del cubo tachado que se da en el aparato o en su caja indica que el producto, al final de su ciclo de vida útil, se debe desechar por separado del resto de los residuos. La recogida diferenciada de este aparato, al final de su ciclo de vida, ha sido organizada y programada por el fabricante. Por lo tanto, el usuario que desee deshacerse de este aparato deberá ponerse en contacto con el fabricante y seguir las indicaciones que éste le dará para permitir la recogida por separado de este aparato que ha alcanzado el final de su ciclo de vida. La adecuada recogida diferenciada para mandar después el aparato a una central de reciclado, de tratamiento o de desecho compatible con el medio ambiente contribuye a evitar posibles efectos negativos sobre aquél y sobre la salud, y favorece el reciclaje o la reutilización de los materiales de los que se compone el aparato. El desecho abusivo del producto por parte del propietario comporta la aplicación de las sanciones administrativas previstas por la normativa vigente.

**BG** **ИНФОРМАЦИЯ ЗА ПОТРЕБИТЕЛЯ:** свързана с **Директива 2011/65/EU и 012/19/EU**. Да не се смесва с битови отпадъци и да се изхвърля на обозначените за това места! Моля прочетете упътването, преди употреба! Зачеркнатият символ на кошчето върху уредата върху кутията му показва, че продуктът в края на ползения си жизнен цикъл трябва да се изхвърля отделно от другите отпадъци. Следователно потребителят, който желае да изхвърли това устройство, трябва да се свърже с производителя и да следва инструкциите, които той ще даде за да позволи разделното събиране на това устройство, което е достигнало края на жизнения си цикъл. Подходящото диференцирано събиране за по-късно изпращане на устройството до център за рециклиране третирано или обезвреждане съвместим с околната среда допринася за изпращането на възможни негативни ефекти върху него и върху здравето благоприятства рециклирането или повторната употреба на материалите от апарата и е измислен. Злоупотребата с продукта от собственика води до прилагане на административни санкции, предвидени от действащите разпоредби. **НОСИТЕЛ:** Prima Group 2004 OOD; София, 1784, Младост 1, бл. 144, партер; Тел.: +359 2 988 45 72;



IMPORTER: Prima Group 2004 LTD, Bulgaria, 1784 Sofia, Mladost 1, bl. 144, Ground Floor; Phone: +359 2 988 45 72;