

OPTONICA

USER MANUAL

WATERPROOF COB STRIP

CHECK POINTS:

1. Please check the luminaire carefully before the installation.
2. Ensure the power is off before wiring and installation.

HOW TO CHOOSE A POWER SUPPLY:

TIPS

1. Please be kindly informed that the total wattage of LED strip lights should not exceed the max wattage of the adapter you chose.
2. All the adapters mentioned in this User Guide have only one DC output terminal. Thus they can only be used for one single strip light or a strip connected in series.
3. To guaranty the lighting uniformity of both the front and the end of the strip light, please do not connect the led strip light more than 5m.
4. If you want to use several strip lights together, please connect them in parallel and choose another adapter with more than one output terminal.

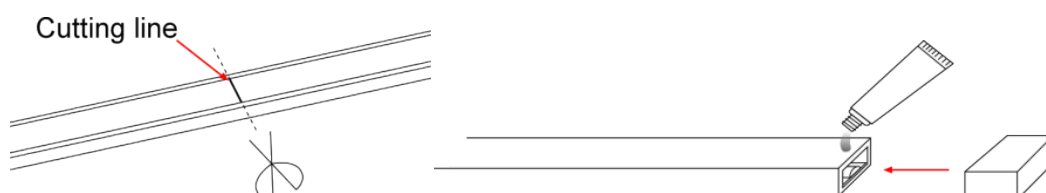
HOW TO INSTALL

STEP 1

Please prepare all the required accessories before connecting and wiring.

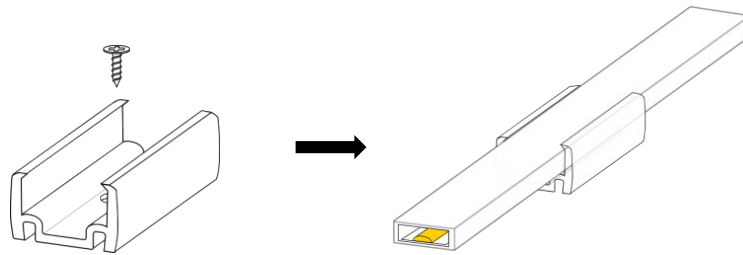
STEP 2

If you need to cut the strip, please cut it along the cutting line at the back of the strip. The newly cut ends should to be sealed with end-caps and glue.



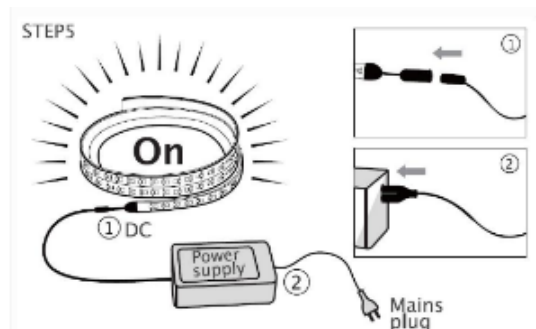
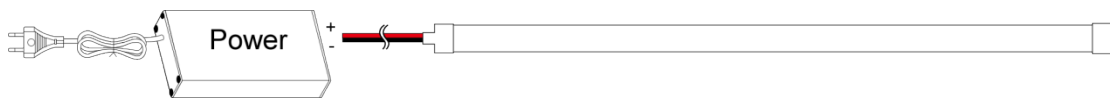
STEP 3

Use fix clip and scrow to fix strip. Fix the fixing clip at the appropriate area by the screw, then put the strip into the clip.



STEP 4

Connect the LED strip to the power.



HOW TO CONNECT LED STRIP LIGHT IN PARALLEL

1. Please prepare two or more LED strips, and make sure the total wattage of LED strips should not exceed the max wattage of the adaptor you chose.
2. Please prepare another adaptor with more than one output terminal.
3. Please ensure that all the LED strips you want to be connected in parallel should be equipped with a DC port.
4. If a LED strip without any DC port, please equip it with the DC cable . Please also make sure the positive and negative should be connected correctly.
5. When all the strips are equipped with a DC port, connect them directly into the adaptor for more than one terminal.