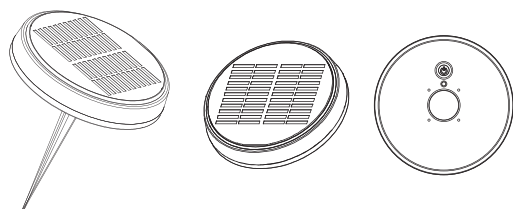


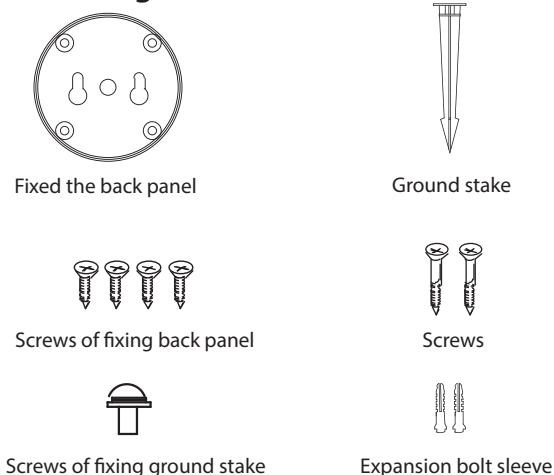
Thank you for buying solar light. Please read this manual carefully before operating your product and retain it for future reference.



Product introduction

- Solar charging zero electricity bill
- With day and night sensor automatically light up at night
- IP 65 protection level waterproof and dust proof
- It can be used on the lawn or installed on the wall

Parts diagram



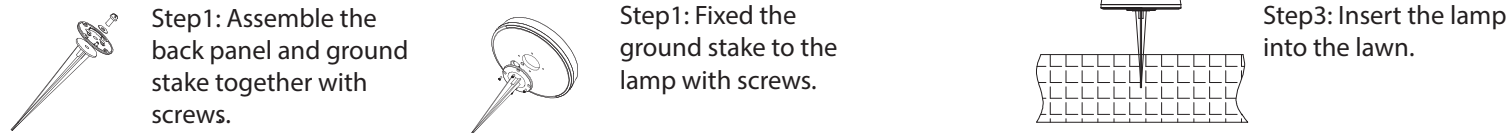
Technical parameter

Lamp body	Power	0.45W
	Lamp beads	32*5050
	Size	165*165*31.5mm
Solar panel	Type	Polycrystalline silicon
	Size	Φ144.7*1.6mm
	Parameter	0.6W DC5.5V
Battery	Voltage	DC3.7V
	Battery capacity	2000mAh
The whole lamp	Luminous flux(LM)	8
	Color temperature	9355-CCT / 9356-RGB
	IP protection level	IP65

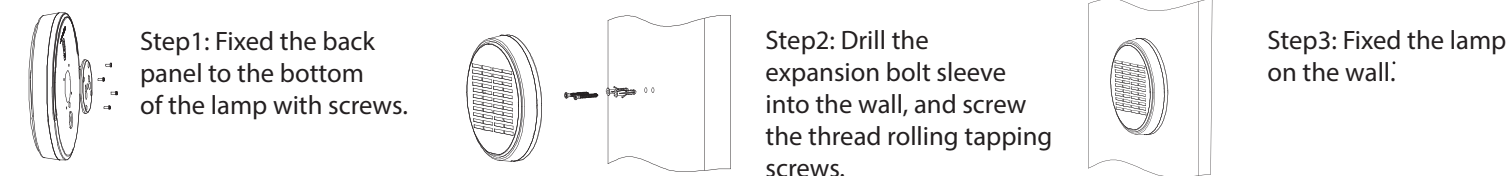
Instructions for use

Click the rear button of the lamp and pat the lamp shell slightly to switch between the different ones lights.

Instructions Installation method1:



Instructions Installation method2:



CAUTIONS

1. CHECK WHETHER THE SWITCH IS ON.
2. MAKE SURE THE INSTALL DIRECTION OF PRODUCT IS CORRECT.
3. MAKE SURE THERE IS NOTHING TO OBSTRUCT THE SOLAR PANEL TO ABSORB THE SUNLIGHT.
4. CLEAN THE DUST OR DEBRIS OF THE SOLAR PANEL ONCE EVERY THERE TO FOUR MONTH TO AVOID TO AFFECT THE USING EFFECT.
5. IN FALL OR WINTER IT IS NORMAL THAT THE CHARGING EFFECT WILL BE WEAKENED AND SHORTEN THE LIGHTING TIME IF IT LASTS RAIN OR CLOUDY MANY DAYS.
6. THE PRODUCT BUILT-IN BATTERY DO NOT PLACE THE PRODUCT ON FIRE.