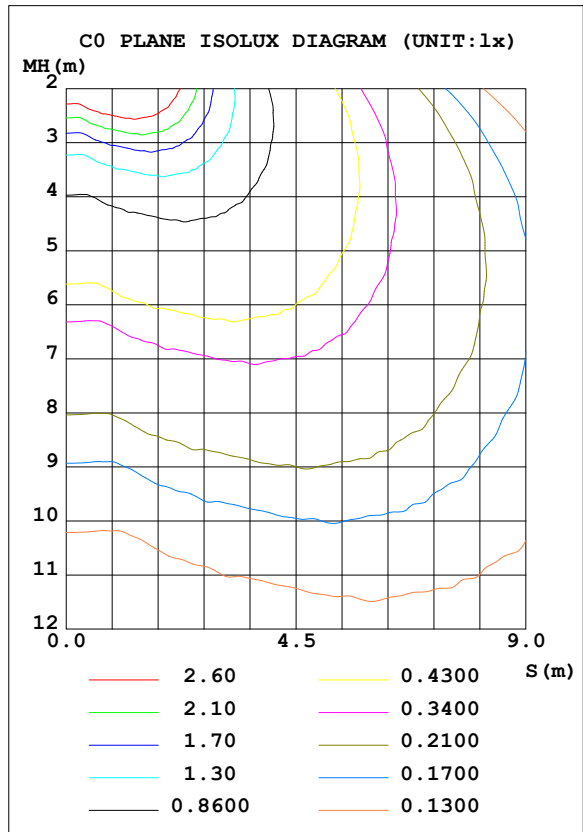
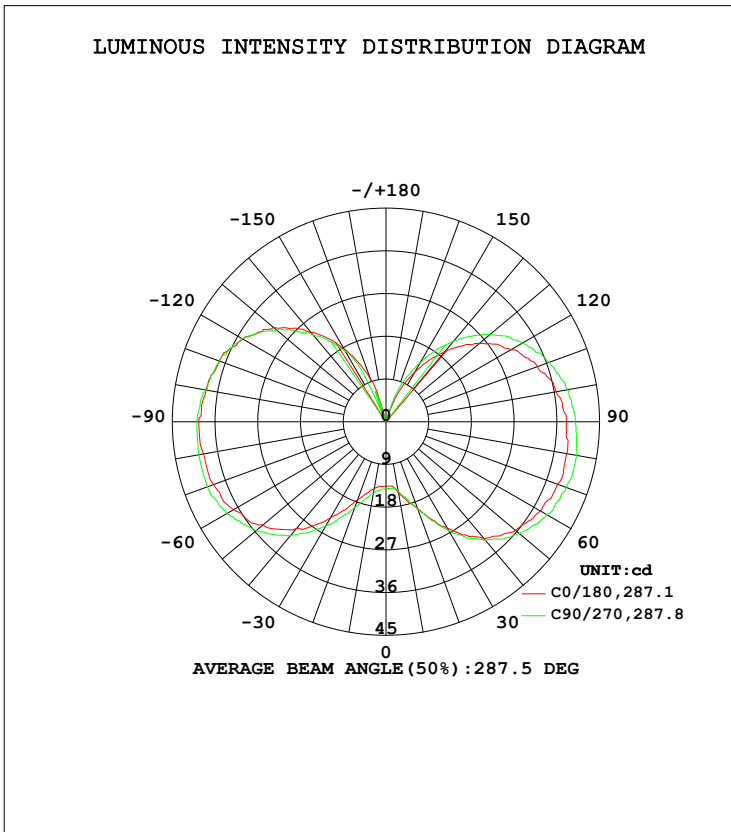


LUMINAIRE PHOTOMETRIC TEST REPORT

Test:U:230.20V I:0.0189A P:4.0425W PF:0.9268 Freq:50.00Hz Lamp Flux:399.291x1 lm		
NAME:	TYPE:	WEIGHT:N/A
SPEC.:N/A	DIM.: N/A	SERIAL No.:
MFR.:	SUR.:	Shielding Angle:

DATA OF LAMP		PHOTOMETRIC DATA Eff: 98.77 lm/W			
MODEL	SPARAC-G9-4W-TGE1-3	I _{max} (cd)	41.81	S/MH (C0/180)	2.84
NOMINAL POWER (W)	4	LOR (%)	100.0	S/MH (C90/270)	2.82
RATED VOLTAGE (V)	220-240	TOTAL FLUX (lm)	399.29	<input checked="" type="checkbox"/> UP, DN (C0-180)	22.7,27.3
NOMINAL FLUX (lm)	399.291	CIE CLASS	DIFFUSE	<input checked="" type="checkbox"/> UP, DN (C180-360)	23.0,27.0
LAMPS INSIDE	1	<input checked="" type="checkbox"/> up (%)	45.7	CIBSE SHR NOM	2.00
TEST VOLTAGE (V)	230	<input checked="" type="checkbox"/> down (%)	54.3	CIBSE SHR MAX	2.00



C Range: 0 - 360DEG
 C Interval: 22.5DEG
 Test Speed: HIGH
 Temperature: 24.9DEG
 Operators: Link Chai
 Test Date: 2022-07-19

Range: 0 - 180DEG
 Interval: 1.0DEG
 Test System: EVERFINE GO-R5000_V2 SYSTEM V2.0.366
 Humidity: 60%
 Test Distance: 26.000m [K=1.4046]
 Remarks:

ZONAL FLUX DIAGRAM

ZONAL FLUX DIAGRAM:

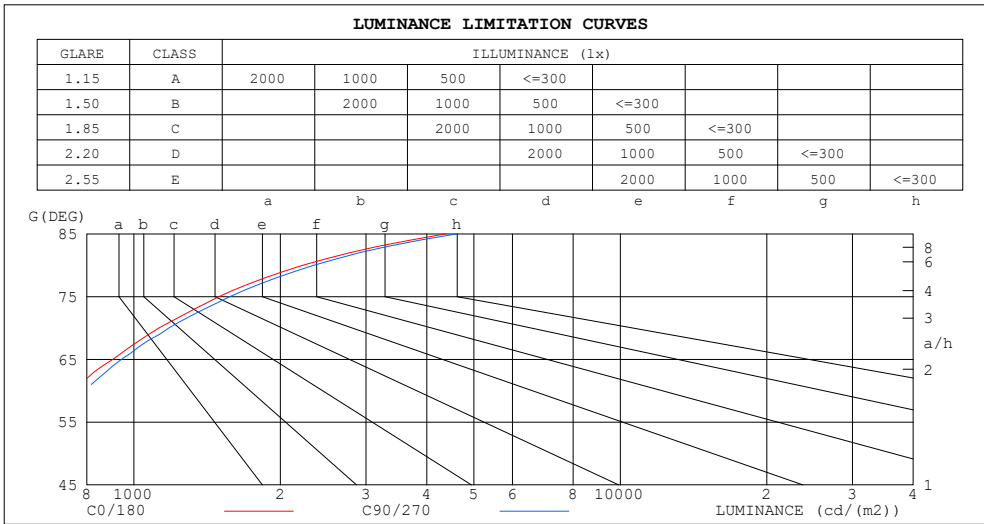
DEG	C0	C45	C90	C135	C180	C225	C270	C315	DEG	zone	total	%lum, lamp
10	15.20	15.50	14.83	14.09	14.31	14.69	15.36	15.82	0- 10	1.367	1.367	0.34,0.34
20	19.54	20.22	19.48	18.12	17.61	17.85	19.19	20.40	10- 20	4.815	6.182	1.55,1.55
30	25.92	25.55	26.45	24.49	23.38	23.09	25.40	27.28	20- 30	10.31	16.50	4.13,4.13
40	32.21	31.02	32.57	31.09	29.39	27.97	31.32	33.06	30- 40	17.88	34.37	8.61,8.61
50	35.59	34.76	36.63	35.36	33.79	32.98	35.74	36.57	40- 50	25.79	60.16	15.1,15.1
60	37.61	38.21	39.11	38.22	37.02	36.95	38.74	38.74	50- 60	32.87	93.03	23.3,23.3
70	38.51	39.79	40.39	40.09	38.66	39.56	40.01	39.79	60- 70	38.48	131.5	32.9,32.9
80	38.66	40.09	40.76	40.84	39.04	40.84	40.01	39.71	70- 80	42.02	173.5	43.5,43.5
90	38.06	40.01	39.87	40.91	39.41	40.84	39.79	39.11	80- 90	43.36	216.9	54.3,54.3
100	36.42	38.66	38.89	40.39	38.51	40.09	38.29	37.91	90-100	42.67	259.6	65,65
110	33.94	35.97	36.57	38.67	37.32	38.28	37.39	35.66	100-110	39.81	299.4	75,75
120	30.37	31.93	33.12	35.60	34.77	34.83	35.06	32.36	110-120	34.85	334.2	83.7,83.7
130	25.63	26.31	28.49	31.55	30.94	28.91	30.05	27.72	120-130	27.93	362.1	90.7,90.7
140	19.34	19.48	22.12	25.57	24.57	23.00	23.88	21.42	130-140	19.45	381.6	95.6,95.6
150	11.93	12.07	14.40	18.14	17.82	16.46	17.22	13.47	140-150	11.96	393.6	98.6,98.6
160	3.560	3.326	6.523	9.393	9.507	9.571	5.639	5.302	150-160	5.154	398.7	99.9,99.9
170	0	0	0	0	0	0	0	0	160-170	0.5761	399.3	100,100
180	0	0	0	0	0	0	0	0	170-180	0	399.3	100,100
DEG	LUMINOUS INTENSITY:cd									UNIT:lm		

C Range: 0 - 360DEG
 C Interval: 22.5DEG
 Test Speed: HIGH
 Temperature:24.9DEG
 Operators:Link Chai
 Test Date:2022-07-19

Range: 0 - 180DEG
 Interval: 1.0DEG
 Test System:EVERFINE GO-R5000_V2 SYSTEM V2.0.366
 Humidity:60%
 Test Distance:26.000m [K=1.4046]
 Remarks:

LUMINANCE LIMITATION CURVES

Test:U:230.20V I:0.0189A P:4.0425W PF:0.9268 Freq:50.00Hz Lamp Flux:399.291x1 lm		
NAME:	TYPE:	WEIGHT:N/A
SPEC.:N/A	DIM.: N/A	SERIAL No.:
MFR.:	SUR.:	Shielding Angle:



LUMINANCE cd/(m2)		
G (DEG)	C0/180	C90/270
85	4377	4617
80	2227	2347
75	1497	1575
70	1126	1181
65	906	943
60	752	782
55	637	661
50	554	570
45	481	494

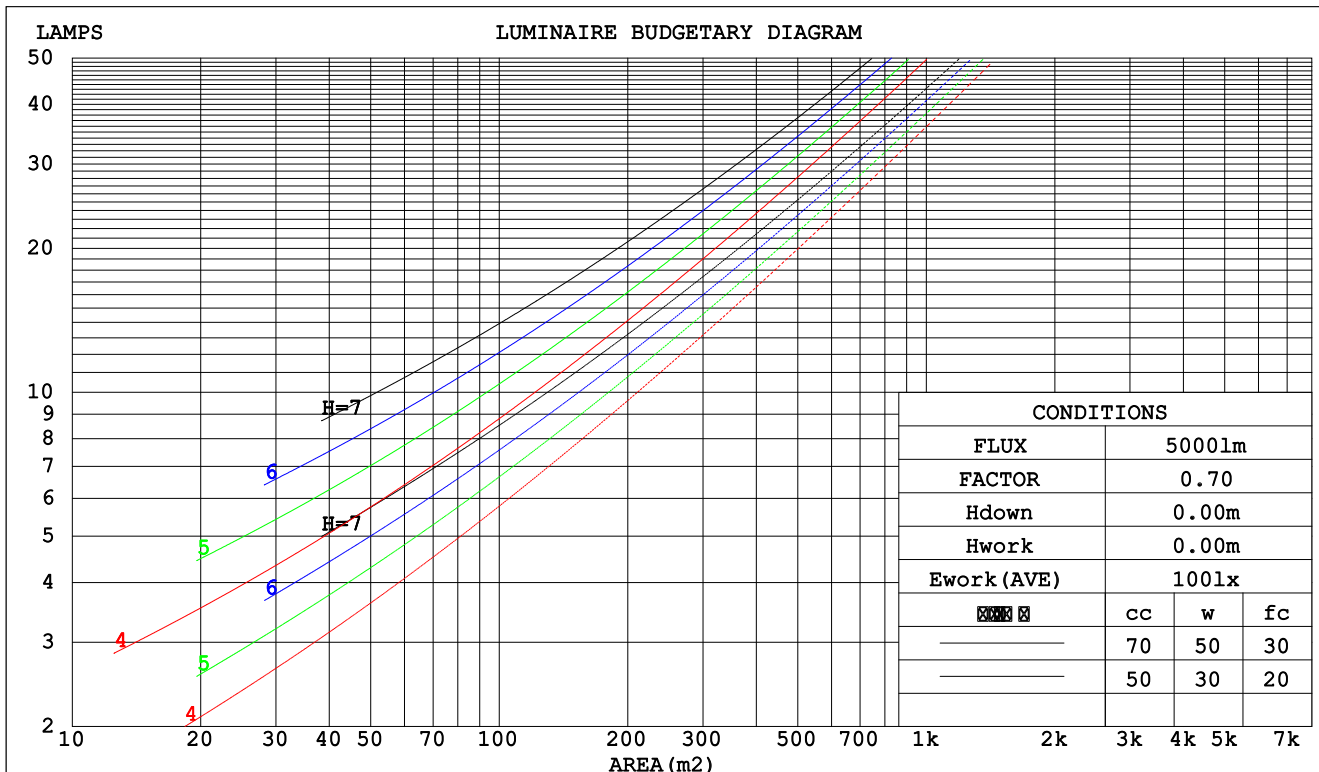
C Range: 0 - 360DEG
 C Interval: 22.5DEG
 Test Speed: HIGH
 Temperature:24.9DEG
 Operators:Link Chai
 Test Date:2022-07-19

Range: 0 - 180DEG
 Interval: 1.0DEG
 Test System:EVERFINE GO-R5000_V2 SYSTEM V2.0.366
 Humidity:60%
 Test Distance:26.000m [K=1.4046]
 Remarks:

CU AND LUMINAIRE BUDGETARY ESTIMATE DIAGRAM

Test:U:230.20V I:0.0189A P:4.0425W PF:0.9268 Freq:50.00Hz Lamp Flux:399.291x1 lm		
NAME:	TYPE:	WEIGHT:N/A
SPEC.:N/A	DIM.: N/A	SERIAL No.:
MFR.:	SUR.:	Shielding Angle:

☑cc	80%			70%			50%			30%			10%			0
☑w	50%	30%	10%	50%	30%	10%	50%	30%	10%	50%	30%	10%	50%	30%	10%	0
☑fc	20%			20%			20%			20%			20%			0
RCR	RCR:Room Cavity Ratio						Coefficients of Utilization(CU)									
0.0	1.08	1.08	1.08	1.00	1.00	1.00	.86	.86	.86	.72	.72	.72	.60	.60	.60	.54
1.0	.86	.80	.75	.80	.74	.69	.67	.63	.59	.55	.52	.49	.44	.42	.40	.34
2.0	.72	.64	.57	.67	.59	.53	.55	.50	.44	.45	.41	.37	.36	.32	.29	.24
3.0	.62	.52	.45	.57	.48	.41	.47	.40	.35	.38	.33	.29	.30	.26	.23	.18
4.0	.54	.44	.36	.49	.40	.34	.41	.34	.28	.33	.28	.23	.26	.22	.18	.14
5.0	.47	.37	.30	.43	.34	.28	.36	.29	.23	.29	.23	.19	.23	.18	.15	.11
6.0	.42	.32	.25	.38	.30	.23	.32	.25	.20	.26	.20	.16	.20	.16	.12	.09
7.0	.37	.28	.22	.34	.26	.20	.28	.22	.17	.23	.18	.14	.18	.14	.10	.08
8.0	.33	.25	.19	.31	.23	.17	.26	.19	.14	.21	.16	.12	.16	.12	.09	.06
9.0	.30	.22	.16	.28	.20	.15	.23	.17	.13	.19	.14	.10	.15	.11	.08	.05
10.0	.28	.20	.14	.25	.18	.13	.21	.15	.11	.18	.12	.09	.14	.10	.07	.05



C Range: 0 - 360DEG
 C Interval: 22.5DEG
 Test Speed: HIGH
 Temperature:24.9DEG
 Operators:Link Chai
 Test Date:2022-07-19

☑ Range: 0 - 180DEG
 ☑ Interval: 1.0DEG
 Test System:EVERFINE GO-R5000_V2 SYSTEM V2.0.366
 Humidity:60%
 Test Distance:26.000m [K=1.4046]
 Remarks:

WEC AND CCEC

Test:U:230.20V I:0.0189A P:4.0425W PF:0.9268 Freq:50.00Hz Lamp Flux:399.291x1 lm		
NAME:	TYPE:	WEIGHT:N/A
SPEC.:N/A	DIM.: N/A	SERIAL No.:
MFR.:	SUR.:	Shielding Angle:

☒cc	80%			70%			50%			30%			10%			0
☒w	50%	30%	10%	50%	30%	10%	50%	30%	10%	50%	30%	10%	50%	30%	10%	0
☒fc	20%			20%			20%			20%			20%			0
RCR	RCR:Room Cavity Ratio						Wall Exitance Coefficients(WEC)									
0.0																
1.0	.433	.246	.078	.412	.235	.075	.373	.214	.068	.336	.194	.062	.302	.175	.057	
2.0	.359	.197	.060	.339	.187	.058	.303	.169	.052	.270	.151	.047	.239	.135	.043	
3.0	.311	.166	.050	.293	.157	.047	.260	.141	.043	.230	.126	.039	.201	.111	.034	
4.0	.276	.143	.042	.260	.136	.040	.229	.122	.036	.201	.108	.033	.175	.095	.029	
5.0	.248	.126	.037	.233	.120	.035	.205	.107	.031	.179	.095	.028	.155	.083	.025	
6.0	.225	.113	.032	.212	.107	.031	.186	.095	.028	.162	.084	.025	.139	.073	.022	
7.0	.206	.102	.029	.194	.097	.028	.170	.086	.025	.148	.076	.022	.127	.066	.019	
8.0	.190	.093	.026	.179	.088	.025	.157	.078	.022	.136	.069	.020	.116	.060	.017	
9.0	.177	.085	.024	.166	.081	.023	.145	.072	.020	.126	.063	.018	.108	.055	.016	
10.0	.165	.079	.022	.155	.075	.021	.136	.066	.019	.117	.058	.017	.100	.050	.014	

☒cc	80%			70%			50%			30%			10%			0
☒w	50%	30%	10%	50%	30%	10%	50%	30%	10%	50%	30%	10%	50%	30%	10%	0
☒fc	20%			20%			20%			20%			20%			0
RCR	RCR:Room Cavity Ratio						Ceiling Cavity Exitance Coefficients(CCEC)									
0.0	.539	.539	.539	.460	.460	.460	.314	.314	.314	.180	.180	.180	.058	.058	.058	
1.0	.540	.506	.476	.462	.434	.409	.316	.299	.283	.182	.173	.165	.058	.056	.053	
2.0	.534	.485	.443	.458	.417	.383	.314	.289	.267	.181	.168	.157	.058	.054	.051	
3.0	.528	.470	.424	.452	.405	.367	.311	.282	.258	.179	.164	.152	.058	.053	.050	
4.0	.520	.458	.411	.446	.396	.357	.307	.276	.251	.178	.162	.149	.057	.053	.049	
5.0	.513	.449	.403	.440	.389	.350	.303	.272	.247	.176	.159	.147	.057	.052	.048	
6.0	.505	.442	.397	.434	.383	.345	.300	.268	.244	.174	.158	.145	.056	.052	.048	
7.0	.498	.436	.392	.429	.378	.342	.296	.265	.242	.172	.156	.144	.056	.051	.048	
8.0	.492	.431	.389	.423	.374	.339	.293	.262	.240	.170	.155	.143	.055	.051	.047	
9.0	.485	.426	.386	.418	.370	.337	.290	.260	.239	.169	.154	.143	.055	.050	.047	
10.0	.480	.422	.384	.413	.367	.335	.287	.258	.238	.167	.153	.142	.054	.050	.047	

C Range: 0 - 360DEG
 C Interval: 22.5DEG
 Test Speed: HIGH
 Temperature:24.9DEG
 Operators:Link Chai
 Test Date:2022-07-19

☒ Range: 0 - 180DEG
 ☒ Interval: 1.0DEG
 Test System:EVERFINE GO-R5000_V2 SYSTEM V2.0.366
 Humidity:60%
 Test Distance:26.000m [K=1.4046]
 Remarks:

UGR(Unified Glare Rating) Table

Test:U:230.20V I:0.0189A P:4.0425W PF:0.9268 Freq:50.00Hz Lamp Flux:399.291x1 lm										
NAME:					TYPE:			WEIGHT:N/A		
SPEC.:N/A					DIM.: N/A			SERIAL No.:		
MFR.:					SUR.:			Shielding Angle:		
ceiling/cavity	0.7	0.7	0.5	0.5	0.3	0.7	0.7	0.5	0.5	0.3
walls	0.5	0.3	0.5	0.3	0.3	0.5	0.3	0.5	0.3	0.3
working plane	0.2	0.2	0.2	0.2	0.2	0.2	0.2	0.2	0.2	0.2
Room dimensions	Viewed crosswise					Viewed endwise				
x = 2H y = 2H	8.9	10.0	9.7	10.9	12.0	8.9	10.0	9.7	10.9	12.0
3H	12.2	13.3	13.1	14.2	15.3	12.2	13.3	13.1	14.2	15.3
4H	14.1	15.1	14.9	16.0	17.1	14.1	15.1	15.0	16.0	17.2
6H	16.1	17.0	17.0	17.9	19.1	16.2	17.2	17.1	18.1	19.2
8H	17.2	18.1	18.1	19.0	20.2	17.4	18.3	18.3	19.2	20.4
12H	18.5	19.3	19.3	20.2	21.4	18.7	19.5	19.6	20.5	21.6
4H 2H	9.9	10.9	10.8	11.8	12.9	9.9	10.9	10.7	11.8	12.9
3H	13.4	14.3	14.3	15.2	16.4	13.4	14.3	14.3	15.2	16.4
4H	15.4	16.2	16.3	17.1	18.3	15.4	16.2	16.3	17.1	18.3
6H	17.6	18.3	18.5	19.2	20.5	17.6	18.3	18.6	19.3	20.5
8H	18.8	19.4	19.7	20.4	21.6	18.8	19.5	19.8	20.5	21.7
12H	20.1	20.7	21.1	21.7	23.0	20.2	20.9	21.2	21.8	23.1
8H 4H	16.1	16.8	17.1	17.8	19.0	16.1	16.8	17.1	17.8	19.0
6H	18.6	19.2	19.6	20.1	21.4	18.6	19.2	19.6	20.2	21.4
8H	20.0	20.5	21.0	21.5	22.8	20.0	20.5	21.0	21.5	22.8
12H	21.6	22.0	22.5	23.0	24.3	21.6	22.1	22.6	23.1	24.4
12H 4H	16.3	16.9	17.3	17.9	19.2	16.3	17.0	17.3	17.9	19.2
6H	18.9	19.4	19.9	20.4	21.7	18.9	19.4	19.9	20.4	21.7
8H	20.4	20.9	21.4	21.9	23.2	20.5	20.9	21.4	21.9	23.2
Variations with the observer position at spacings:										
S = 1.0H	+ 0.1 / - 0.1					+ 0.1 / - 0.1				
1.5H	+ 0.2 / - 0.3					+ 0.2 / - 0.3				
2.0H	+ 0.3 / - 0.4					+ 0.3 / - 0.4				

CIE Pub.117, 399.3 lm Total Lamp Luminous Flux Corrected (8log(F/F0) = -3.2)

C Range: 0 - 360DEG
 C Interval: 22.5DEG
 Test Speed: HIGH
 Temperature:24.9DEG
 Operators:Link Chai
 Test Date:2022-07-19

Range: 0 - 180DEG
 Interval: 1.0DEG
 Test System:EVERFINE GO-R5000_V2 SYSTEM V2.0.366
 Humidity:60%
 Test Distance:26.000m [K=1.4046]
 Remarks:

UTILIZATION FACTORS TABLE

Test:U:230.20V I:0.0189A P:4.0425W PF:0.9268 Freq:50.00Hz Lamp Flux:399.291x1 lm		
NAME:	TYPE:	WEIGHT:N/A
SPEC.:N/A	DIM.: N/A	SERIAL No.:
MFR.:	SUR.:	Shielding Angle:

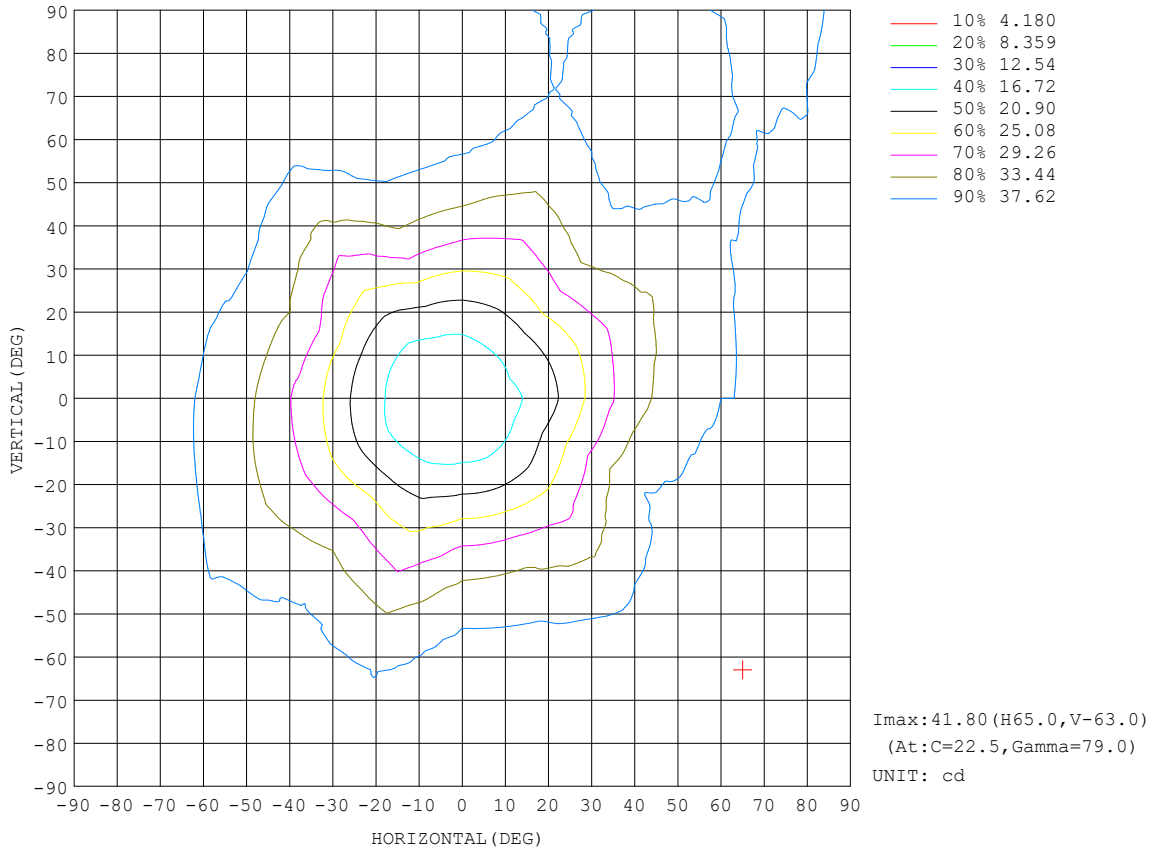
REFLECTANCE										
Ceiling	0.8	0.8	0.8	0.7	0.7	0.7	0.5	0.5	0.5	0
Walls	0.7	0.5	0.3	0.7	0.5	0.3	0.7	0.5	0.3	0
Working plane	0.2	0.2	0.2	0.2	0.2	0.2	0.2	0.2	0.2	0
ROOM INDEX	UTILIZATION FACTORS (PERCENT) $k(RI) \times RCR = 5$									
k = 0.60	35	22	15	33	21	14	30	20	13	6
0.80	44	29	21	41	28	20	37	25	18	9
1.00	51	36	27	48	34	26	42	33	23	12
1.25	58	43	33	54	41	32	47	36	28	15
1.50	63	49	39	59	46	37	51	40	33	18
2.00	71	58	48	66	54	45	57	47	40	22
2.50	76	64	54	71	60	51	61	52	45	25
3.00	80	69	60	75	64	56	64	56	49	28
4.00	86	76	68	80	71	63	68	61	55	32
5.00	89	81	73	83	75	68	71	65	59	35
ROOM INDEX	UF(total)									Direct
According to DIN EN 13032-2 2004			Suspended				SHRNOM = 1.25			

C Range: 0 - 360DEG
 C Interval: 22.5DEG
 Test Speed: HIGH
 Temperature:24.9DEG
 Operators:Link Chai
 Test Date:2022-07-19

Range: 0 - 180DEG
 Interval: 1.0DEG
 Test System:EVERFINE GO-R5000_V2 SYSTEM V2.0.366
 Humidity:60%
 Test Distance:26.000m [K=1.4046]
 Remarks:

ISOCANDELA DIAGRAM

Test:U:230.20V I:0.0189A P:4.0425W PF:0.9268 Freq:50.00Hz Lamp Flux:399.291x1 lm		
NAME:	TYPE:	WEIGHT:N/A
SPEC.:N/A	DIM.: N/A	SERIAL No.:
MFR.:	SUR.:	Shielding Angle:

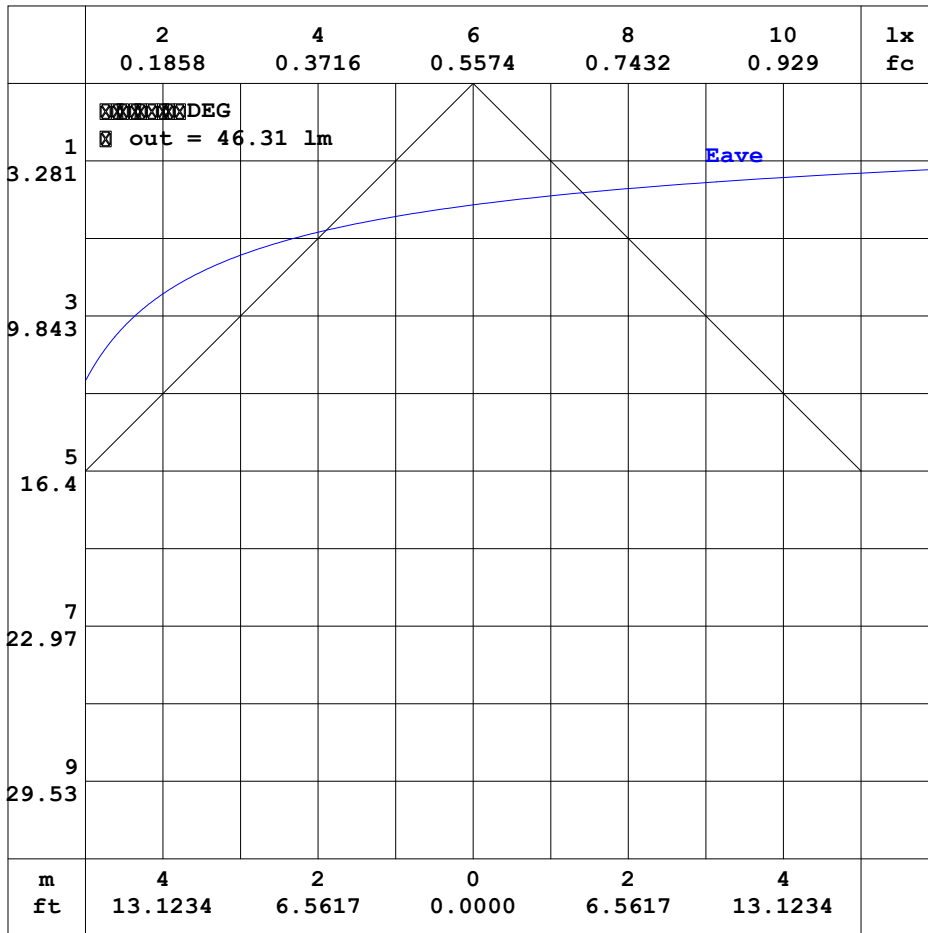


C Range: 0 - 360DEG
 C Interval: 22.5DEG
 Test Speed: HIGH
 Temperature: 24.9DEG
 Operators: Link Chai
 Test Date: 2022-07-19

Range: 0 - 180DEG
 Interval: 1.0DEG
 Test System: EVERFINE GO-R5000_V2 SYSTEM V2.0.366
 Humidity: 60%
 Test Distance: 26.000m [K=1.4046]
 Remarks:

AAI CURVES

Test:U:230.20V I:0.0189A P:4.0425W PF:0.9268 Freq:50.00Hz Lamp Flux:399.291x1 lm		
NAME:	TYPE:	WEIGHT:N/A
SPEC.:N/A	DIM.: N/A	SERIAL No.:
MFR.:	SUR.:	Shielding Angle:



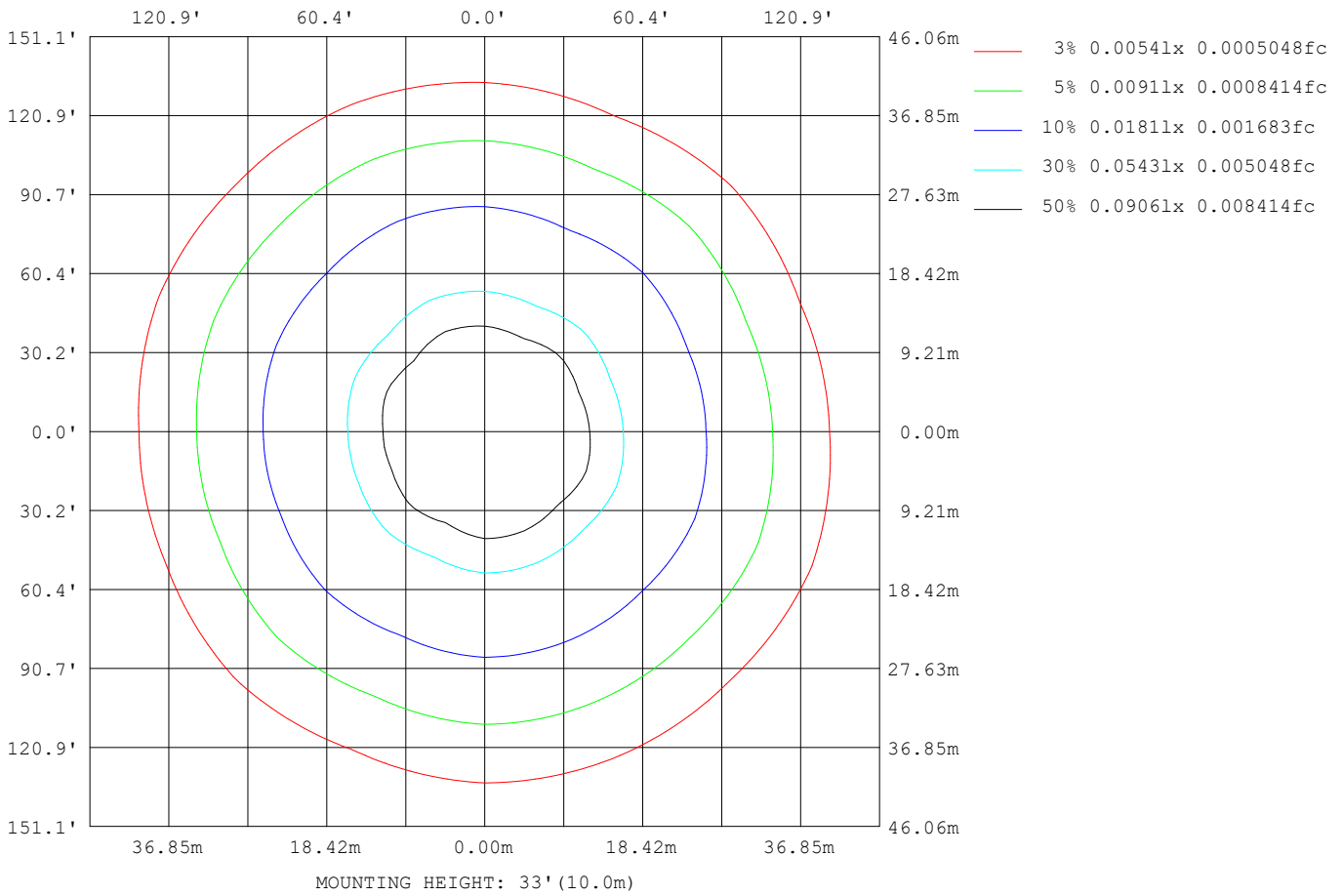
Note:The Curves indicate the illuminated area and the average illumination when the luminaire is at different distance.

C Range: 0 - 360DEG
 C Interval: 22.5DEG
 Test Speed: HIGH
 Temperature:24.9DEG
 Operators:Link Chai
 Test Date:2022-07-19

Range: 0 - 180DEG
 Interval: 1.0DEG
 Test System:EVERFINE GO-R5000_V2 SYSTEM V2.0.366
 Humidity:60%
 Test Distance:26.000m [K=1.4046]
 Remarks:

ISOLUX DIAGRAM

Test:U:230.20V I:0.0189A P:4.0425W PF:0.9268 Freq:50.00Hz Lamp Flux:399.291x1 lm		
NAME:	TYPE:	WEIGHT:N/A
SPEC.:N/A	DIM.: N/A	SERIAL No.:
MFR.:	SUR.:	Shielding Angle:



C Range: 0 - 360DEG
 C Interval: 22.5DEG
 Test Speed: HIGH
 Temperature:24.9DEG
 Operators:Link Chai
 Test Date:2022-07-19

Range: 0 - 180DEG
 Interval: 1.0DEG
 Test System:EVERFINE GO-R5000_V2 SYSTEM V2.0.366
 Humidity:60%
 Test Distance:26.000m [K=1.4046]
 Remarks:

LED Avg.L Report

Test:U:230.20V I:0.0189A P:4.0425W PF:0.9268 Freq:50.00Hz Lamp Flux:399.291x1 lm		
NAME:	TYPE:	WEIGHT:N/A
SPEC.:N/A	DIM.: N/A	SERIAL No.:
MFR.:	SUR.:	Shielding Angle:

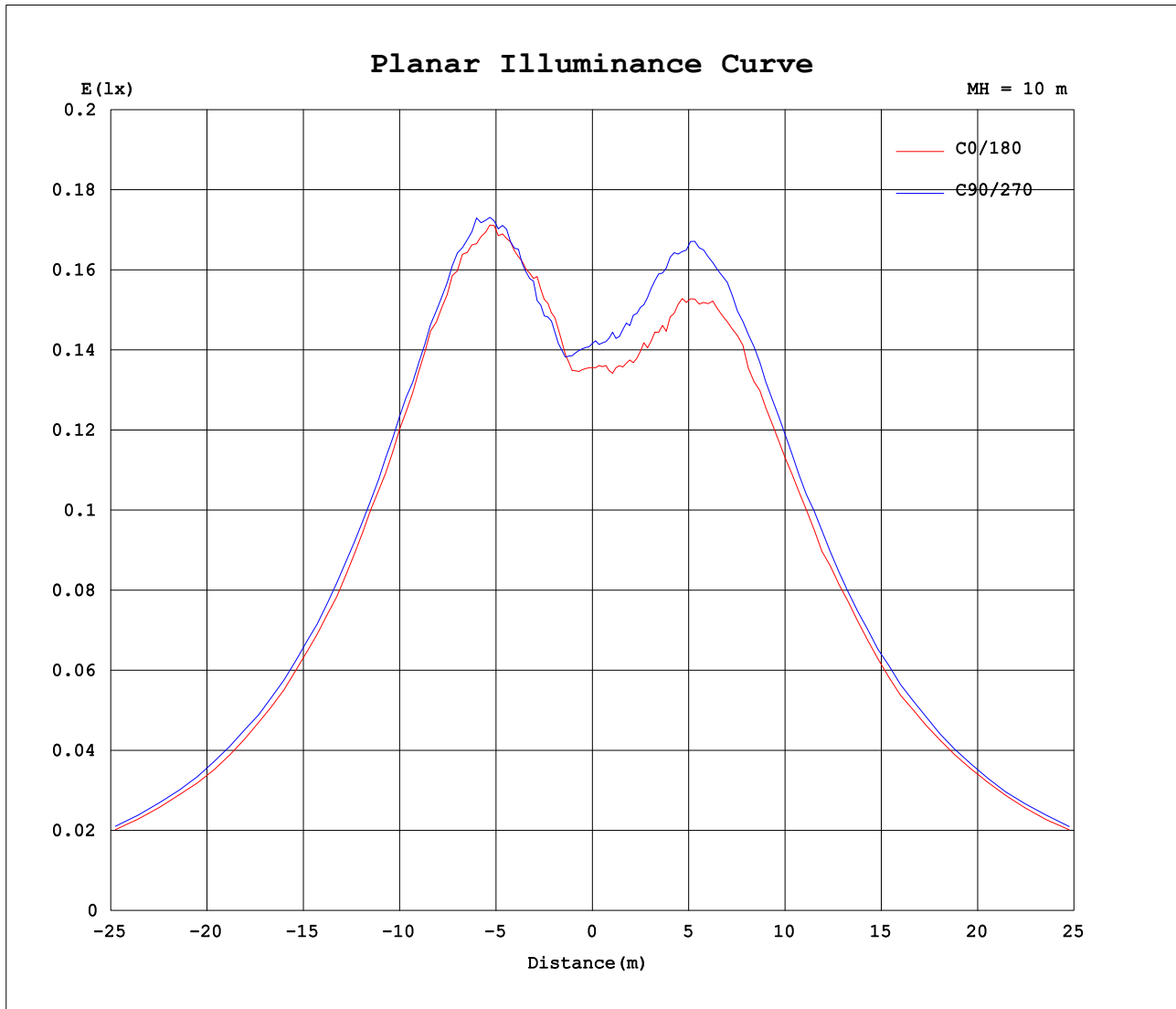
AvgL	cd/m2
L_0~180 (65) av	904
L_0~180 (75) av	1501
L_0~180 (85) av	4450
L_90~270 (65) av	937
L_90~270 (75) av	1560
L_90~270 (85) av	4595
L_45 (65) av	924
L_45 (75) av	1553
L_45 (85) av	4647

Standard: GB/T 29293-2012

C Range: 0 - 360DEG
 C Interval: 22.5DEG
 Test Speed: HIGH
 Temperature:24.9DEG
 Operators:Link Chai
 Test Date:2022-07-19

Range: 0 - 180DEG
 Interval: 1.0DEG
 Test System:EVERFINE GO-R5000_V2 SYSTEM V2.0.366
 Humidity:60%
 Test Distance:26.000m [K=1.4046]
 Remarks:

Planar Illuminance Curve



C Range: 0 - 360DEG
C Interval: 22.5DEG
Test Speed: HIGH
Temperature: 24.9DEG
Operators: Link Chai
Test Date: 2022-07-19

Range: 0 - 180DEG
 Interval: 1.0DEG
Test System: EVERFINE GO-R5000_V2 SYSTEM V2.0.366
Humidity: 60%
Test Distance: 26.000m [K=1.4046]
Remarks:

LUMINOUS DISTRIBUTION INTENSITY DATA

Test:U:230.20V I:0.0189A P:4.0425W PF:0.9268 Freq:50.00Hz Lamp Flux:399.291x1 lm		
NAME:	TYPE:	WEIGHT:N/A
SPEC.:N/A	DIM.: N/A	SERIAL No.:
MFR.:	SUR.:	Shielding Angle:

Table--1

UNIT: cd

C (DEG) ☒ (DEG)	0	22.5	45	67.5	90	112.5	135	157.5	180	202.5	225	247.5	270	292.5	315	337.5			
0	13.6	13.3	13.8	14.0	14.2	14.0	14.1	14.2	13.6	13.3	13.8	14.0	14.2	14.0	14.1	14.2			
5	13.6	13.4	13.9	14.0	14.1	13.9	13.9	13.9	13.6	13.8	13.9	14.3	14.5	14.5	14.5	14.8			
10	15.2	15.6	15.5	15.1	14.8	14.4	14.1	13.9	14.3	14.4	14.7	15.1	15.4	15.4	15.8	16.1			
15	17.2	17.9	17.3	16.8	16.8	16.0	15.7	15.3	15.7	15.5	16.0	16.6	16.8	17.3	17.8	17.8			
20	19.5	20.7	20.2	19.4	19.5	18.3	18.1	17.3	17.6	17.6	17.8	19.2	19.2	19.8	20.4	19.9			
25	22.7	24.3	22.8	22.7	23.0	20.9	21.0	20.3	20.5	20.6	20.1	22.3	22.1	22.6	23.8	22.8			
30	25.9	28.2	25.5	26.7	26.4	23.4	24.5	23.4	23.4	24.4	23.1	26.0	25.4	25.2	27.3	25.6			
35	29.1	31.9	28.7	30.0	29.9	25.8	28.1	26.4	26.8	27.9	25.7	29.6	28.5	27.4	30.3	28.6			
40	32.2	35.0	31.0	32.9	32.6	28.2	31.1	29.3	29.4	31.5	28.0	32.5	31.3	29.6	33.1	30.9			
45	34.0	37.2	32.6	34.7	34.9	30.4	33.4	31.2	32.0	33.7	30.8	34.9	33.6	31.6	35.1	32.4			
50	35.6	38.3	34.8	36.5	36.6	32.7	35.4	33.3	33.8	35.7	33.0	37.0	35.7	33.4	36.6	33.9			
55	36.6	39.1	36.3	37.8	37.9	34.7	37.2	35.1	35.8	37.3	35.2	38.9	37.2	34.5	37.9	35.1			
60	37.6	40.0	38.2	38.9	39.1	36.0	38.2	36.0	37.0	38.5	36.9	39.9	38.7	35.8	38.7	36.1			
65	38.3	40.5	38.7	39.6	39.9	37.5	39.5	37.5	38.1	39.9	38.6	40.5	39.3	36.6	39.4	36.9			
70	38.5	41.3	39.8	40.3	40.4	38.2	40.1	38.1	38.7	40.4	39.6	41.3	40.0	37.2	39.8	37.3			
75	38.7	41.7	40.1	40.4	40.8	38.4	40.8	38.7	39.0	40.7	40.1	41.4	40.0	37.5	39.7	37.3			
80	38.7	41.7	40.1	40.7	40.8	38.8	40.8	39.3	39.0	41.1	40.8	41.4	40.0	37.4	39.7	37.5			
85	38.1	41.0	40.5	40.7	40.2	38.7	40.9	39.5	39.4	40.8	40.8	41.1	39.9	37.2	39.7	37.0			
90	38.1	40.7	40.0	40.2	39.9	38.7	40.9	39.6	39.4	40.8	40.8	40.9	39.8	36.8	39.1	36.4			
95	37.3	40.2	39.3	40.0	39.3	38.8	40.8	39.4	39.0	40.8	40.7	40.3	39.3	36.2	38.6	36.0			
100	36.4	39.4	38.7	39.6	38.9	38.4	40.4	38.9	38.5	40.2	40.1	39.6	38.3	35.5	37.9	35.2			
105	35.5	38.4	37.3	38.7	37.8	37.4	39.6	38.1	38.1	39.8	39.6	38.8	38.1	34.8	37.2	34.5			
110	33.9	36.8	36.0	37.1	36.6	36.1	38.7	37.2	37.3	38.9	38.3	38.2	37.4	33.5	35.7	33.5			
115	32.2	35.7	34.0	35.7	34.8	34.4	37.0	35.8	36.4	37.8	37.0	37.2	36.3	31.8	34.0	32.1			
120	30.4	33.7	31.9	33.9	33.1	32.8	35.6	33.9	34.8	35.9	34.8	35.7	35.1	30.1	32.4	30.0			
125	28.6	31.3	29.5	31.9	31.3	30.4	33.7	32.2	32.9	33.5	32.1	33.3	32.7	27.7	30.0	27.6			
130	25.6	28.8	26.3	29.2	28.5	27.8	31.5	29.8	30.9	31.4	28.9	30.9	30.0	25.3	27.7	24.8			
135	22.6	9.24	23.2	25.9	25.5	25.0	28.8	27.0	27.9	29.1	26.1	27.8	27.1	22.1	24.5	21.9			
140	19.3	19.6	19.5	22.5	22.1	22.0	25.6	24.1	24.6	25.5	23.0	24.6	23.9	19.1	21.4	19.0			
145	15.8	18.2	15.9	18.6	18.4	18.7	21.9	20.5	21.5	22.8	19.7	21.0	20.8	16.1	17.8	16.0			
150	11.9	14.0	12.1	14.3	14.4	15.1	18.1	16.7	17.8	19.5	16.5	17.1	17.2	13.2	13.5	12.9			
155	8.33	9.74	1.70	10.2	10.4	11.6	13.9	13.0	13.8	14.8	13.3	12.6	10.9	10.6	9.27	9.13			
160	3.56	1.15	3.33	3.93	6.52	7.95	9.39	9.23	9.51	10.5	9.57	6.72	5.64	2.05	5.30	4.49			
165	0.00	0.00	0.00	0.00	0.00	0.02	0.03	1.53	1.40	1.74	1.46	0.66	0.00	0.00	0.00	0.00			
170	0.00	0.00	0.00	0.00	0.00	0.00	0.00	0.00	0.00	0.00	0.00	0.00	0.00	0.00	0.00	0.00			
175	0.00	0.00	0.00	0.00	0.00	0.00	0.00	0.00	0.00	0.00	0.00	0.00	0.00	0.00	0.00	0.00			
180	0.00	0.00	0.00	0.00	0.00	0.00	0.00	0.00	0.00	0.00	0.00	0.00	0.00	0.00	0.00	0.00			

C Range: 0 - 360DEG
 C Interval: 22.5DEG
 Test Speed: HIGH
 Temperature:24.9DEG
 Operators:Link Chai
 Test Date:2022-07-19

☒ Range: 0 - 180DEG
 ☒ Interval: 1.0DEG
 Test System:EVERFINE GO-R5000_V2 SYSTEM V2.0.366
 Humidity:60%
 Test Distance:26.000m [K=1.4046]
 Remarks: