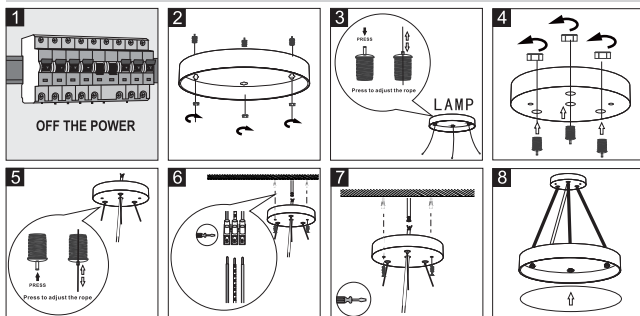
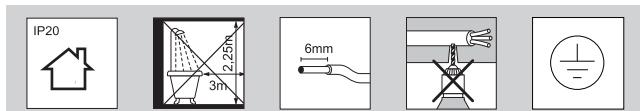




# OPTONICA

Installation Manual



## ⚠ IMPORTANT SAFETY INSTRUCTIONS

Series for indoor use only. If the external flexible cable or cord of this luminaire is damaged, it shall be exclusively replaced by the manufacturer or his service agent or a similar qualified person in order to avoid a hazard. If you are uncertain, please contact us.

Always shut off power to the circuit before starting installation work. In some countries electrical installation work may only be carried out by an authorised electrical contractor.

Contact your local electricity authority for advice.

Different materials require different types of fittings. Always choose screws and plugs that are especially suited to the material.

### Important information!

Keep these instructions for future use.

### Caution!

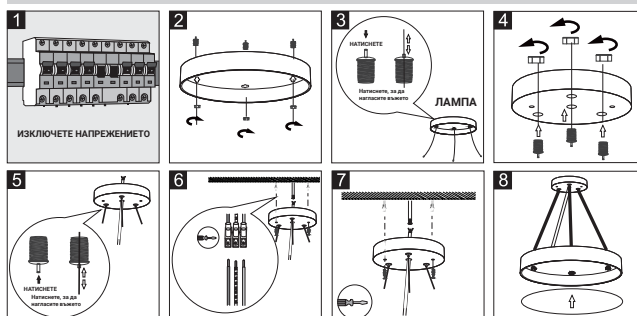
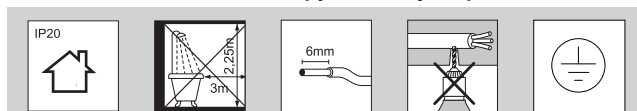
The light source of this product is non-changeable light diodes (LED). Do not disassemble the product, as the light diodes can cause damage to the eyes.

IMPORTER: Prima Group 2004 LTD, Bulgaria, 1784 Sofia, Mladost 1, bl. 144, Ground Floor; Phone: +359 2 988 45 72;



# OPTONICA

Инструкции за употреба



## ⚠ ВАЖНИ ИНСТРУКЦИИ ЗА БЕЗОПАСНОСТ

Продуктът е само за вътрешно ползване. Ако кабелът на осветителното тяло е наранен, е необходимо да бъде заменен, свържете се с Вашия търговец или квалифициран техник. Винаги изключвайте напрежението преди да започнете инсталацията. В някои страни инсталацията се извършва от електротехник. Винаги използвайте монтажни аксесоари, подходящи за материала на конкретния продукт.

### Важна информация!

Запазете тези инструкции за използване в бъдеще.

### Внимание!

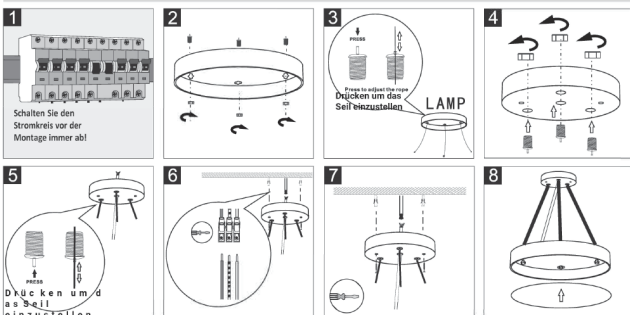
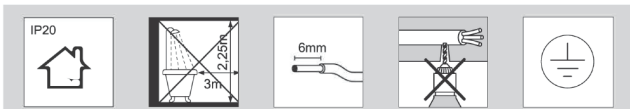
Източника на светлина в този продукт е несменяем (LED). Не разглобявайте продукта, диодите могат да нарушат зрението Ви.

ВНОСИТЕЛ: Прима Груп 2004 ООД, България, 1784 София, Младост 1, бл. 144, Партер; Телефон: +359 2 988 45 72;



# OPTONICA

Installations Anleitung



## ⚠ WICHTIGE SICHERHEITSAUWEISUNGEN

Serie nur für den Innenbereich. Wenn das Kabel dieser Leuchte beschädigt ist, darf es ausschließlich vom Hersteller oder seinem Kundendienst oder einer ähnlich qualifizierten Person ersetzt werden, um Gefahren zu vermeiden. Bei Unsicherheiten kontaktieren Sie uns bitte. Schalten Sie den Stromkreis immer stromlos, bevor Sie mit der Installation beginnen. In einigen Ländern dürfen Elektroinstallationsarbeiten nur von einem autorisierten Elektroinstallateur durchgeführt werden.

Wenden Sie sich für eine Beratung an Ihre örtliche Elektroinstallateur. Unterschiedliche Materialien erfordern unterschiedliche Beschläge. Wählen Sie immer speziell für das Material geeignete Schrauben und Dübel.

### Wichtige Informationen!

Bewahren Sie diese Anleitung für den zukünftigen Gebrauch auf.

### Vorsicht!

Die Lichtquelle dieses Produkts sind nicht austauschbare Leuchtdioden (LED). Zerlegen Sie das Produkt nicht, da die Leuchtdioden die Augen schädigen können.

IMPORTEUR: Prima Group 2004 LTD, Bulgarien, 1784 Sofia, Mladost 1, bl. 144, Erdgeschoss; Telefon: +359 2 988 45 72;