

OPTONICA

Installation Manual SKU: 2014

1. Switch off the power
2. Ensure that the void depth is minimum 120 mm and the thickness of the ceiling is maximum 20 mm (Pic 1)
3. Drill the appropriate hole on the ceiling as per the cut-out size (Pic 2)
4. Take out the inner ring and install it on the ceiling (Pic 3)
5. Connect the power 100-240VAC (Pic 4)
6. Put the LED bulb into the fixture (Pic 5)
7. Switch on the power if above steps are done properly without any mistakes.

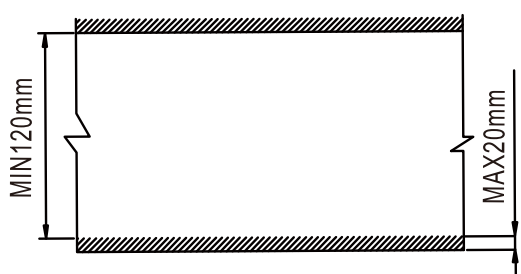
Инструкции За Употреба SKU: 2014

1. Изключете захранването
2. Уверете се, че дълбочината на кухината е минимум 120 mm и дебелината на таванът е максимум 20 mm (Снимка 1)
3. Пробийте подходящия отвор на тавана според размера на изрязването (Снимка 2)
4. Извадете вътрешния пръстен и го монтирайте на тавана (Снимка 3)
5. Свържете захранването 100-240VAC (Снимка 4)
6. Поставете LED крушката в тялото (Снимка 5)
7. Включете захранването, ако горните стъпки са направени правилно, без грешки.

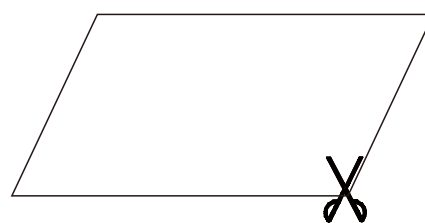
Installationsanleitung Artikelnr.: 2014

1. Schalten Sie die Stromversorgung aus
2. Stellen Sie sicher, dass die Hohlraumtiefe min. 120mm beträgt und die Deckenstärke nicht mehr als 20mm aufweist (Bild 1)
3. Bohren Sie das entsprechende Loch in die Decke gemäß der Ausschnittgröße (Bild 2).
4. Nehmen Sie den Innenring heraus und bringen Sie den Rahmen an der Decke an (Bild 3)
5. Schließen Sie die Netzkabel (220-240V) korrekt an (Bild 4)
6. Fixieren Sie das Leuchtmittel im Rahmen (Bild 5)
7. Schalten Sie die Stromversorgung wieder ein, wenn die obigen Schritte fehlerfrei ausgeführt wurden

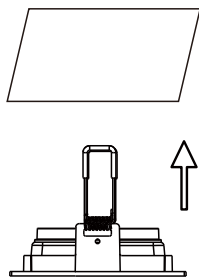
1



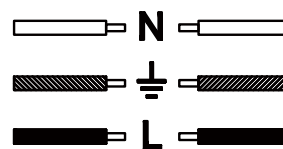
2



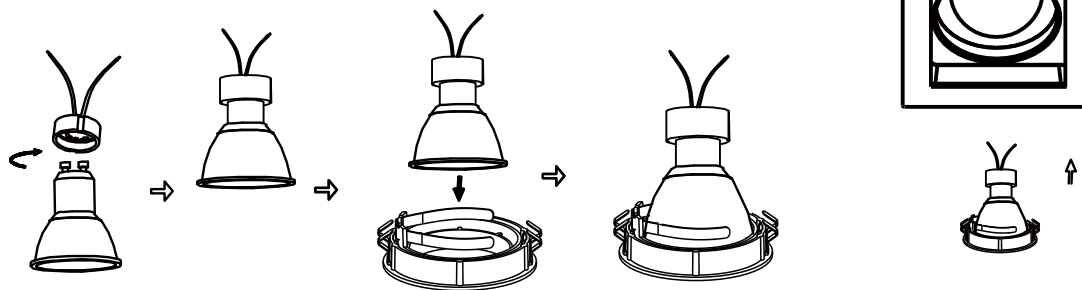
3



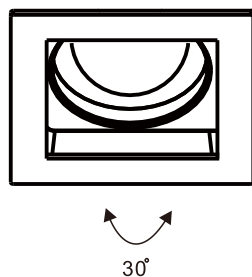
4



5



6



IMPORTER: Prima Group 2004 LTD, Bulgaria, 1784 Sofia, Mladost 1, bl. 144, Ground Floor;
Phone: +359 2 988 45 72;
ВНОСИТЕЛ: Прима Груп 2004 ООД, България, 1784 София, Младост 1, бл. 144, Партер;
Телефон: +359 2 988 45 72;
IMPORTEUR: Prima Group 2004 LTD, Bulgarien, 1784 Sofia, Mladost 1, bl. 144, Erdgeschoss;
Telefon: +359 2 988 45 72;