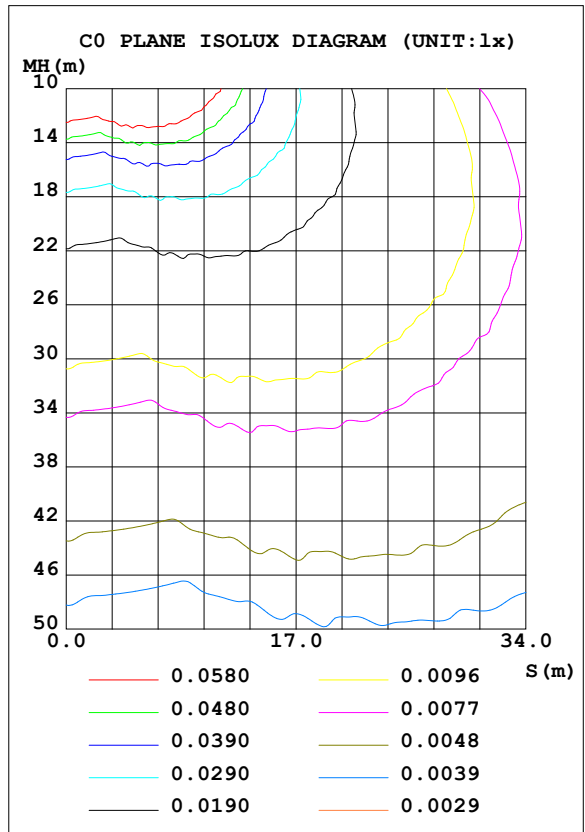
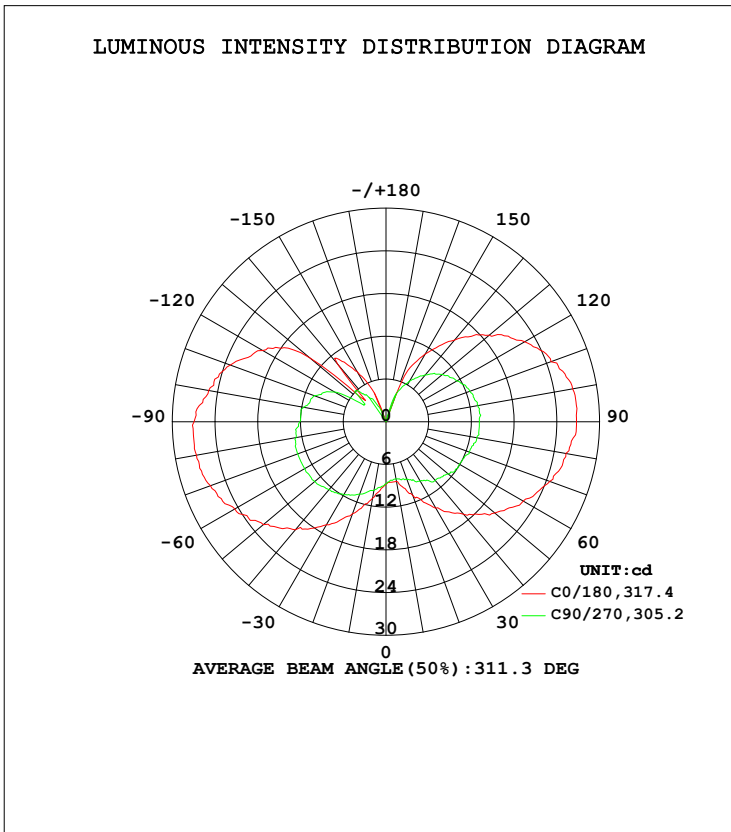


## LUMINAIRE PHOTOMETRIC TEST REPORT

Test:U:230.24V I:0.0184A P:2.0291W PF:0.4783 Freq:50.01Hz Lamp Flux:197.666x1 lm		
NAME:	TYPE:LED	WEIGHT:N/A
SPEC.:N/A	DIM.:	SERIAL No.:N/A
MFR.:	SUR.:	Shielding Angle:N/A

DATA OF LAMP		PHOTOMETRIC DATA <span style="float: right;">Eff: 97.41 lm/W</span>			
MODEL	SPARAC-G9-2W-0S1-N-3	I <sub>max</sub> (cd)	27.85	S/MH (C0/180)	2.89
NOMINAL POWER (W)	2	LOR (%)	100.0	S/MH (C90/270)	2.06
RATED VOLTAGE (V)	220-240	TOTAL FLUX (lm)	197.67	<input checked="" type="checkbox"/> UP, DN (C0-180)	24.1, 26.9
NOMINAL FLUX (lm)	197.666	CIE CLASS	DIFFUSE	<input checked="" type="checkbox"/> UP, DN (C180-360)	20.5, 28.5
LAMPS INSIDE	1	<input checked="" type="checkbox"/> up (%)	44.7	CIBSE SHR NOM	2.00
TEST VOLTAGE (V)	230	<input checked="" type="checkbox"/> down (%)	55.3	CIBSE SHR MAX	2.00



C Range: 0 - 360DEG  
 C Interval: 22.5DEG  
 Test Speed: HIGH  
 Temperature: 24.9DEG  
 Operators: Link Chai  
 Test Date: 2022-07-19

Range: 0 - 180DEG  
 Interval: 1.0DEG  
 Test System: EVERFINE GO-R5000\_V2 SYSTEM V2.0.366  
 Humidity: 60%  
 Test Distance: 26.000m [K=1.4046]  
 Remarks:

## ZONAL FLUX DIAGRAM

ZONAL FLUX DIAGRAM:

DEG	C0	C45	C90	C135	C180	C225	C270	C315	zone	total	%lum, lamp	
10	8.531	8.304	8.156	9.220	10.92	10.73	9.788	9.539	0- 10	0.8667	0.8667	0.44,0.44
20	10.99	10.65	8.600	10.80	13.75	13.53	10.83	10.80	10- 20	2.938	3.804	1.92,1.92
30	14.02	13.22	9.639	12.61	16.71	16.25	11.86	12.22	20- 30	5.704	9.509	4.81,4.81
40	16.97	15.87	10.75	14.11	19.81	18.74	12.46	13.56	30- 40	9.003	18.51	9.36,9.36
50	19.95	18.44	11.42	15.05	22.48	21.17	13.05	14.98	40- 50	12.57	31.08	15.7,15.7
60	22.27	21.02	11.94	16.16	24.51	22.79	13.20	15.84	50- 60	16.01	47.09	23.8,23.8
70	24.50	22.71	12.46	16.71	26.25	24.62	13.20	16.87	60- 70	18.99	66.08	33.4,33.4
80	25.67	23.96	12.98	16.87	27.04	24.91	12.83	16.87	70- 80	21.15	87.23	44.1,44.1
90	26.75	24.76	13.12	16.87	26.97	23.96	12.08	16.87	80- 90	22.14	109.4	55.3,55.3
100	26.61	24.69	13.12	16.71	25.30	22.85	11.71	16.63	90-100	21.85	131.2	66.4,66.4
110	24.67	23.44	12.53	15.53	23.28	15.92	10.74	15.45	100-110	20.10	151.3	76.6,76.6
120	22.49	21.09	11.49	13.56	20.02	18.06	8.374	14.03	110-120	16.31	167.6	84.8,84.8
130	18.94	18.01	10.38	11.43	13.93	14.54	3.856	11.90	120-130	12.93	180.6	91.3,91.3
140	14.98	14.63	8.603	8.912	10.58	10.86	5.116	9.138	130-140	9.018	189.6	95.9,95.9
150	10.99	10.81	6.603	6.075	8.239	7.051	3.701	0.0768	140-150	5.551	195.1	98.7,98.7
160	3.691	6.615	4.159	3.080	2.219	1.686	0.2211	0	150-160	2.293	197.4	99.9,99.9
170	0	0	0	0	0	0	0	0	160-170	0.2442	197.7	100,100
180	0	0	0	0	0	0	0	0	170-180	0	197.7	100,100
DEG	LUMINOUS INTENSITY:cd									UNIT:lm		

Conical surface Flux(90deg): 24.346 lm

%lum = 12.3%  
%lamp = 12.3%

Conical surface Flux(120deg): 47.091 lm

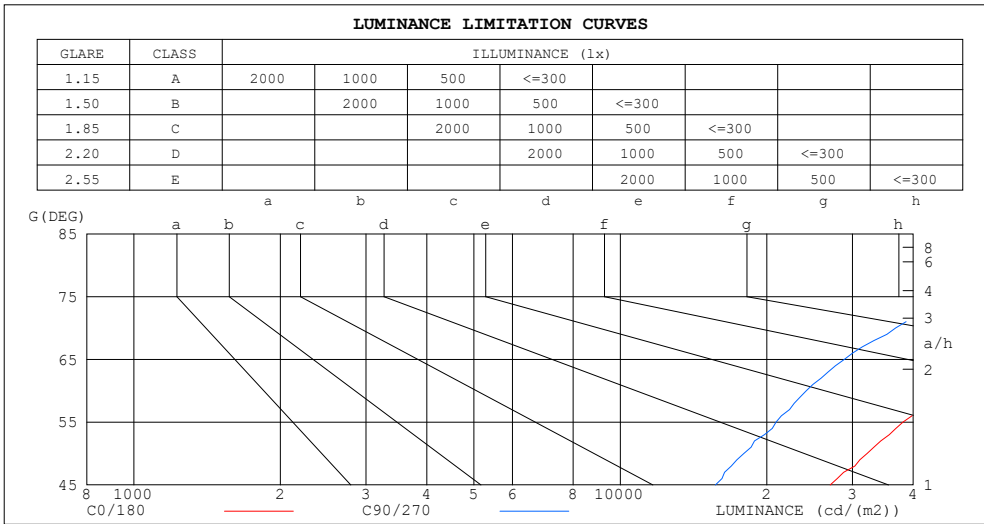
%lum = 23.8%  
%lamp = 23.8%

C Range: 0 - 360DEG  
C Interval: 22.5DEG  
Test Speed: HIGH  
Temperature:24.9DEG  
Operators:Link Chai  
Test Date:2022-07-19

Range: 0 - 180DEG  
Interval: 1.0DEG  
Test System:EVERFINE GO-R5000\_V2 SYSTEM V2.0.366  
Humidity:60%  
Test Distance:26.000m [K=1.4046]  
Remarks:

## LUMINANCE LIMITATION CURVES

Test:U:230.24V I:0.0184A P:2.0291W PF:0.4783 Freq:50.01Hz Lamp Flux:197.666x1 lm		
NAME :	TYPE:LED	WEIGHT:N/A
SPEC.:N/A	DIM.:	SERIAL No.:N/A
MFR.:	SUR.:	Shielding Angle:N/A



LUMINANCE cd/(m2)		
G (DEG)	C0/180	C90/270
85	313735	152172
80	153193	75514
75	101614	49778
70	74258	36809
65	57440	28897
60	46156	24128
55	38134	20905
50	32161	17949
45	27015	15683

C Range: 0 - 360DEG  
 C Interval: 22.5DEG  
 Test Speed: HIGH  
 Temperature:24.9DEG  
 Operators:Link Chai  
 Test Date:2022-07-19

Range: 0 - 180DEG  
 Interval: 1.0DEG  
 Test System:EVERFINE GO-R5000\_V2 SYSTEM V2.0.366  
 Humidity:60%  
 Test Distance:26.000m [K=1.4046]  
 Remarks:

### WEC AND CCEC

Test:U:230.24V I:0.0184A P:2.0291W PF:0.4783 Freq:50.01Hz Lamp Flux:197.666x1 lm		
NAME:	TYPE:LED	WEIGHT:N/A
SPEC.:N/A	DIM.:	SERIAL No.:N/A
MFR.:	SUR.:	Shielding Angle:N/A

<input checked="" type="checkbox"/> cc	80%			70%			50%			30%			10%			0
<input checked="" type="checkbox"/> w	50%	30%	10%	50%	30%	10%	50%	30%	10%	50%	30%	10%	50%	30%	10%	0
<input checked="" type="checkbox"/> fc	20%			20%			20%			20%			20%			0
RCR	RCR:Room Cavity Ratio						Wall Exitance Coefficients(WEC)									
0.0																
1.0	.437	.248	.079	.416	.237	.075	.377	.216	.069	.341	.197	.063	.308	.178	.057	
2.0	.360	.198	.061	.341	.188	.058	.306	.170	.053	.273	.153	.048	.242	.137	.043	
3.0	.312	.166	.050	.295	.158	.047	.262	.142	.043	.232	.127	.039	.204	.113	.035	
4.0	.276	.144	.042	.260	.136	.040	.230	.122	.036	.202	.109	.033	.177	.096	.029	
5.0	.248	.126	.037	.234	.120	.035	.206	.107	.032	.180	.095	.028	.156	.084	.025	
6.0	.225	.113	.032	.212	.107	.031	.187	.096	.028	.163	.085	.025	.141	.074	.022	
7.0	.206	.102	.029	.194	.097	.028	.171	.086	.025	.149	.076	.022	.128	.067	.020	
8.0	.190	.093	.026	.179	.088	.025	.157	.079	.022	.137	.069	.020	.118	.060	.018	
9.0	.177	.085	.024	.166	.081	.023	.146	.072	.020	.127	.064	.018	.109	.055	.016	
10.0	.165	.079	.022	.155	.075	.021	.136	.067	.019	.118	.059	.017	.101	.051	.015	

<input checked="" type="checkbox"/> cc	80%			70%			50%			30%			10%			0
<input checked="" type="checkbox"/> w	50%	30%	10%	50%	30%	10%	50%	30%	10%	50%	30%	10%	50%	30%	10%	0
<input checked="" type="checkbox"/> fc	20%			20%			20%			20%			20%			0
RCR	RCR:Room Cavity Ratio						Ceiling Cavity Exitance Coefficients(CCEC)									
0.0	.531	.531	.531	.454	.454	.454	.310	.310	.310	.178	.178	.178	.057	.057	.057	
1.0	.532	.498	.467	.455	.428	.402	.311	.294	.278	.179	.170	.162	.057	.055	.052	
2.0	.527	.477	.435	.451	.411	.376	.309	.284	.262	.178	.165	.154	.057	.053	.050	
3.0	.520	.462	.416	.446	.398	.360	.306	.277	.253	.177	.162	.149	.057	.052	.049	
4.0	.512	.450	.403	.440	.389	.350	.302	.271	.247	.175	.159	.146	.056	.052	.048	
5.0	.505	.441	.395	.433	.382	.343	.299	.267	.242	.173	.157	.144	.056	.051	.047	
6.0	.497	.434	.389	.427	.376	.338	.295	.263	.239	.171	.155	.142	.055	.051	.047	
7.0	.490	.428	.384	.422	.371	.335	.291	.260	.237	.169	.153	.141	.055	.050	.047	
8.0	.484	.423	.381	.416	.367	.332	.288	.257	.236	.168	.152	.140	.054	.050	.046	
9.0	.477	.418	.378	.411	.363	.330	.285	.255	.234	.166	.151	.140	.054	.049	.046	
10.0	.471	.414	.376	.406	.360	.328	.282	.253	.233	.164	.150	.139	.053	.049	.046	

C Range: 0 - 360DEG  
 C Interval: 22.5DEG  
 Test Speed: HIGH  
 Temperature:24.9DEG  
 Operators:Link Chai  
 Test Date:2022-07-19

Range: 0 - 180DEG  
 Interval: 1.0DEG  
 Test System:EVERFINE GO-R5000\_V2 SYSTEM V2.0.366  
 Humidity:60%  
 Test Distance:26.000m [K=1.4046]  
 Remarks:

### UGR(Unified Glare Rating) Table

Test:U:230.24V I:0.0184A P:2.0291W PF:0.4783 Freq:50.01Hz Lamp Flux:197.666x1 lm										
NAME:					TYPE:LED			WEIGHT:N/A		
SPEC.:N/A					DIM.:			SERIAL No.:N/A		
MFR.:					SUR.:			Shielding Angle:N/A		
ceiling/cavity	0.7	0.7	0.5	0.5	0.3	0.7	0.7	0.5	0.5	0.3
walls	0.5	0.3	0.5	0.3	0.3	0.5	0.3	0.5	0.3	0.3
working plane	0.2	0.2	0.2	0.2	0.2	0.2	0.2	0.2	0.2	0.2
Room dimensions	Viewed crosswise					Viewed endwise				
x = 2H y = 2H	23.7	24.9	24.5	25.7	26.8	21.1	22.3	21.9	23.1	24.2
3H	27.4	28.4	28.2	29.3	30.4	24.2	25.2	25.0	26.1	27.2
4H	29.4	30.4	30.3	31.3	32.5	25.9	26.9	26.7	27.8	28.9
6H	31.6	32.6	32.5	33.5	34.6	27.8	28.7	28.6	29.6	30.8
8H	32.9	33.8	33.7	34.7	35.8	28.8	29.7	29.7	30.6	31.8
12H	34.2	35.1	35.1	36.0	37.2	30.0	30.9	30.9	31.8	33.0
4H 2H	24.6	25.6	25.5	26.5	27.6	23.0	24.0	23.9	24.9	26.0
3H	28.5	29.4	29.4	30.3	31.4	26.2	27.0	27.0	27.9	29.1
4H	30.7	31.5	31.6	32.4	33.6	27.9	28.8	28.8	29.7	30.9
6H	33.1	33.8	34.0	34.8	36.0	29.9	30.6	30.8	31.6	32.8
8H	34.4	35.1	35.3	36.0	37.3	31.0	31.6	31.9	32.6	33.8
12H	35.9	36.5	36.8	37.5	38.7	32.1	32.8	33.1	33.7	35.0
8H 4H	31.3	32.0	32.2	32.9	34.2	29.3	30.0	30.3	31.0	32.2
6H	34.0	34.6	35.0	35.6	36.8	31.6	32.2	32.5	33.1	34.4
8H	35.6	36.1	36.5	37.1	38.3	32.8	33.3	33.8	34.3	35.6
12H	37.3	37.8	38.3	38.8	40.0	34.2	34.6	35.1	35.6	36.9
12H 4H	31.4	32.1	32.4	33.0	34.3	29.8	30.4	30.7	31.4	32.6
6H	34.3	34.8	35.2	35.8	37.1	32.2	32.7	33.2	33.7	35.0
8H	35.9	36.4	36.9	37.4	38.7	33.6	34.0	34.6	35.0	36.3
Variations with the observer position at spacings:										
S = 1.0H	+ 0.1 / - 0.1					+ 0.1 / - 0.1				
1.5H	+ 0.2 / - 0.3					+ 0.2 / - 0.3				
2.0H	+ 0.3 / - 0.4					+ 0.3 / - 0.4				

CIE Pub.117, 197.7 lm Total Lamp Luminous Flux Corrected (8log(F/F0) = -5.6)

C Range: 0 - 360DEG  
 C Interval: 22.5DEG  
 Test Speed: HIGH  
 Temperature:24.9DEG  
 Operators:Link Chai  
 Test Date:2022-07-19

Range: 0 - 180DEG  
 Interval: 1.0DEG  
 Test System:EVERFINE GO-R5000\_V2 SYSTEM V2.0.366  
 Humidity:60%  
 Test Distance:26.000m [K=1.4046]  
 Remarks:

### UTILIZATION FACTORS TABLE

Test:U:230.24V I:0.0184A P:2.0291W PF:0.4783 Freq:50.01Hz Lamp Flux:197.666x1 lm		
NAME:	TYPE:LED	WEIGHT:N/A
SPEC.:N/A	DIM.:	SERIAL No.:N/A
MFR.:	SUR.:	Shielding Angle:N/A

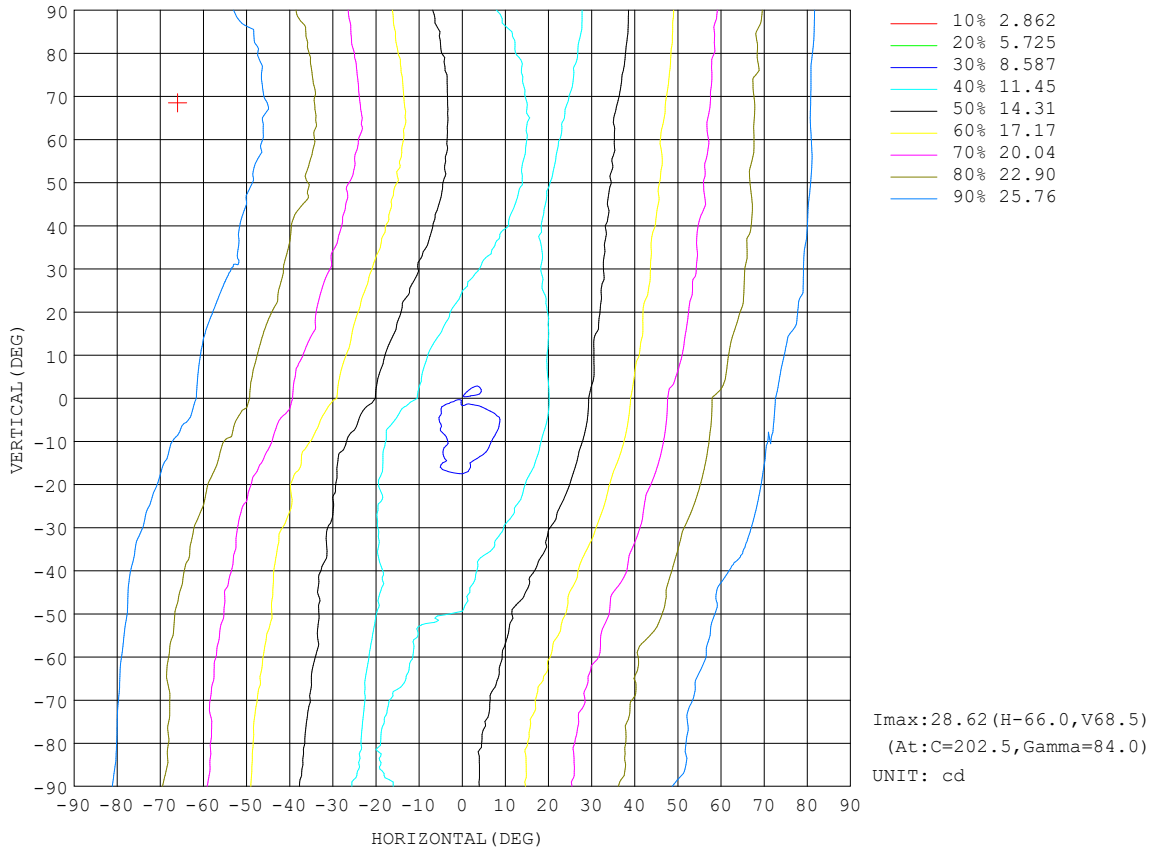
REFLECTANCE										
Ceiling	0.8	0.8	0.8	0.7	0.7	0.7	0.5	0.5	0.5	0
Walls	0.7	0.5	0.3	0.7	0.5	0.3	0.7	0.5	0.3	0
Working plane	0.2	0.2	0.2	0.2	0.2	0.2	0.2	0.2	0.2	0
ROOM INDEX	UTILIZATION FACTORS (PERCENT) $k(RI) \times RCR = 5$									
k = 0.60	36	23	15	34	22	15	31	20	14	7
0.80	44	30	21	42	28	20	37	26	19	9
1.00	51	36	27	48	35	26	42	33	24	13
1.25	58	43	33	54	41	32	48	37	29	16
1.50	63	49	39	59	46	37	51	41	33	18
2.00	71	58	48	66	54	45	57	48	40	23
2.50	76	64	54	71	60	51	61	52	45	26
3.00	81	69	60	75	64	56	64	56	49	29
4.00	86	76	68	80	71	63	68	61	55	33
5.00	90	81	73	83	75	68	71	65	59	36
ROOM INDEX	UF(total)									Direct
According to DIN EN 13032-2 2004			Suspended				SHRNOM = 1.25			

C Range: 0 - 360DEG  
 C Interval: 22.5DEG  
 Test Speed: HIGH  
 Temperature:24.9DEG  
 Operators:Link Chai  
 Test Date:2022-07-19

Range: 0 - 180DEG  
 Interval: 1.0DEG  
 Test System:EVERFINE GO-R5000\_V2 SYSTEM V2.0.366  
 Humidity:60%  
 Test Distance:26.000m [K=1.4046]  
 Remarks:

## ISOCANDELA DIAGRAM

Test:U:230.24V I:0.0184A P:2.0291W PF:0.4783 Freq:50.01Hz Lamp Flux:197.666x1 lm		
NAME :	TYPE:LED	WEIGHT:N/A
SPEC.:N/A	DIM.:	SERIAL No.:N/A
MFR.:	SUR.:	Shielding Angle:N/A

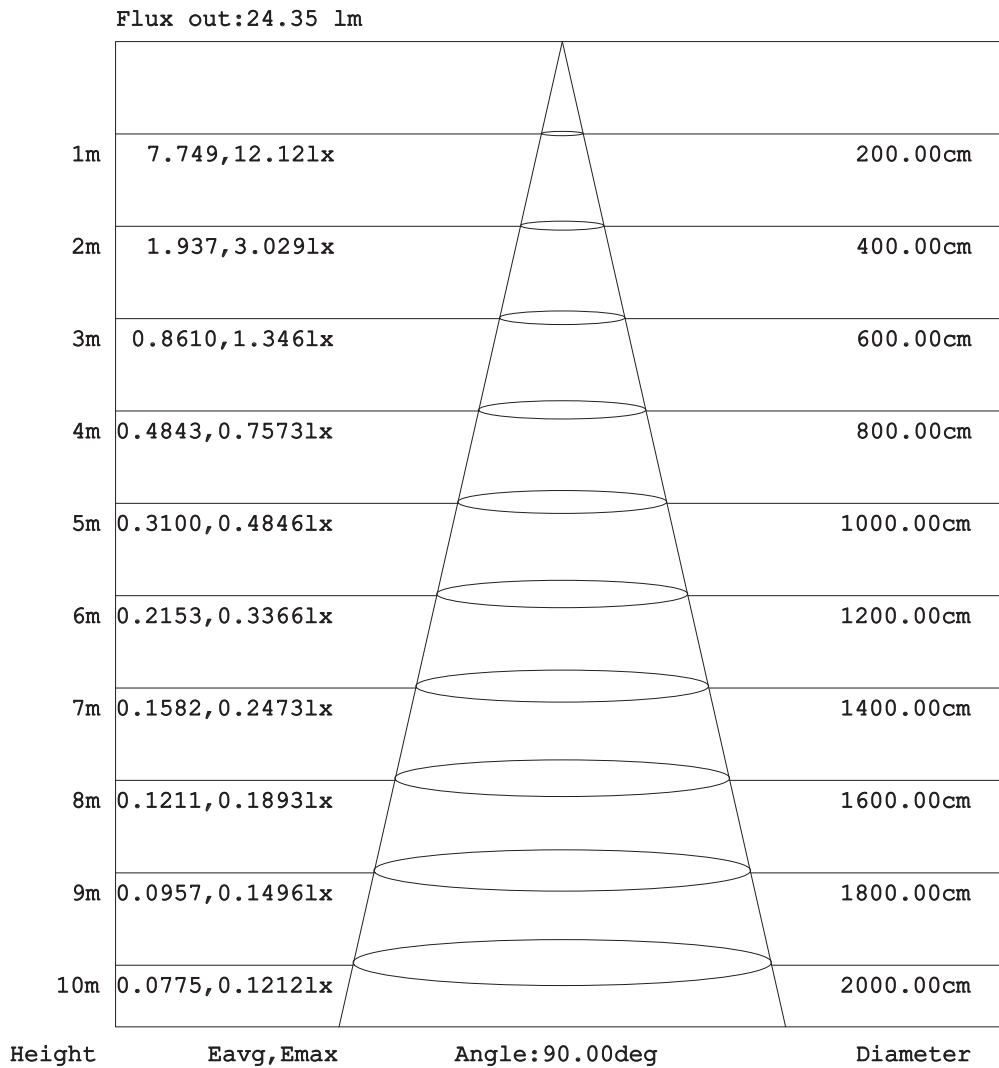


C Range: 0 - 360DEG  
 C Interval: 22.5DEG  
 Test Speed: HIGH  
 Temperature:24.9DEG  
 Operators:Link Chai  
 Test Date:2022-07-19

Range: 0 - 180DEG  
 Interval: 1.0DEG  
 Test System:EVERFINE GO-R5000\_V2 SYSTEM V2.0.366  
 Humidity:60%  
 Test Distance:26.000m [K=1.4046]  
 Remarks:

### AAI Figure

Test:U:230.24V I:0.0184A P:2.0291W PF:0.4783 Freq:50.01Hz Lamp Flux:197.666x1 lm		
NAME :	TYPE:LED	WEIGHT:N/A
SPEC.:N/A	DIM.:	SERIAL No.:N/A
MFR.:	SUR.:	Shielding Angle:N/A



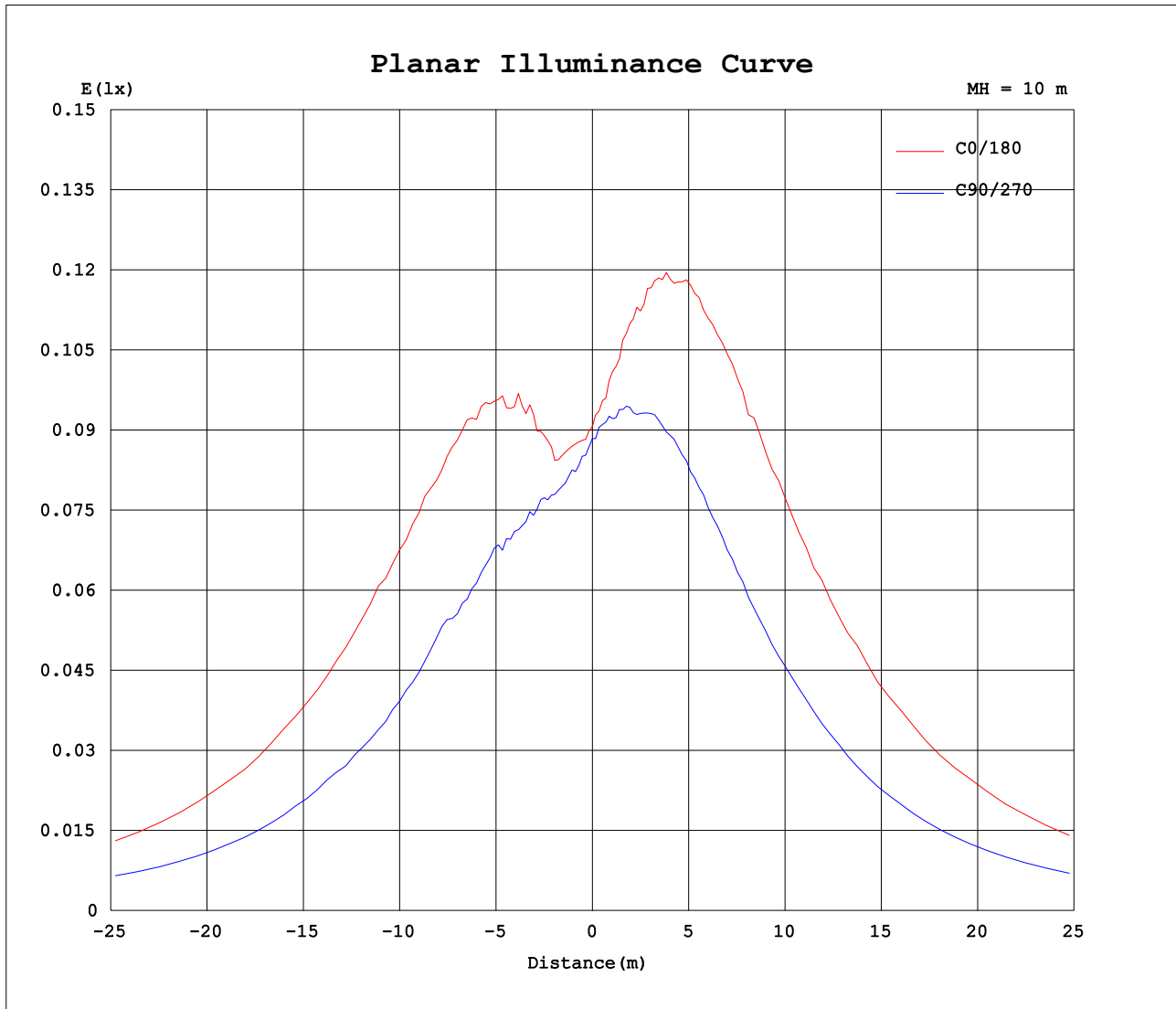
**Note:**The Curves indicate the illuminated area and the average illumination when the luminaire is at different distance.

C Range: 0 - 360DEG  
 C Interval: 22.5DEG  
 Test Speed: HIGH  
 Temperature:24.9DEG  
 Operators:Link Chai  
 Test Date:2022-07-19

Range: 0 - 180DEG  
 Interval: 1.0DEG  
 Test System:EVERFINE GO-R5000\_V2 SYSTEM V2.0.366  
 Humidity:60%  
 Test Distance:26.000m [K=1.4046]  
 Remarks:



## Planar Illuminance Curve



C Range: 0 - 360DEG  
C Interval: 22.5DEG  
Test Speed: HIGH  
Temperature: 24.9DEG  
Operators: Link Chai  
Test Date: 2022-07-19

Range: 0 - 180DEG  
 Interval: 1.0DEG  
Test System: EVERFINE GO-R5000\_V2 SYSTEM V2.0.366  
Humidity: 60%  
Test Distance: 26.000m [K=1.4046]  
Remarks:

**LUMINOUS DISTRIBUTION INTENSITY DATA**

Test:U:230.24V I:0.0184A P:2.0291W PF:0.4783 Freq:50.01Hz Lamp Flux:197.666x1 lm		
NAME:	TYPE:LED	WEIGHT:N/A
SPEC.:N/A	DIM.:	SERIAL No.:N/A
MFR.:	SUR.:	Shielding Angle:N/A

Table--1

UNIT: cd

C (DEG) ☒ (DEG)	0	22.5	45	67.5	90	112.5	135	157.5	180	202.5	225	247.5	270	292.5	315	337.5			
0	8.75	8.75	8.75	8.75	8.75	8.75	8.75	8.75	8.75	8.75	8.75	8.75	8.75	8.75	8.75	8.75			
5	8.53	8.38	8.08	8.09	8.23	8.67	8.83	8.99	9.69	9.63	9.70	9.34	9.27	9.13	9.07	9.07			
10	8.53	8.38	8.30	8.01	8.16	8.75	9.22	9.93	10.9	11.1	10.7	10.1	9.79	9.36	9.54	9.77			
15	9.61	9.47	9.25	8.53	8.45	8.75	10.09	11.2	12.2	12.4	12.1	11.2	10.2	9.81	10.17	10.48			
20	11.0	10.9	10.6	9.26	8.60	8.97	10.8	12.4	13.7	13.9	13.5	12.1	10.8	10.04	10.8	11.9			
25	12.5	12.6	11.8	10.4	8.97	9.58	11.7	13.9	15.3	15.7	14.8	13.1	11.3	10.3	11.4	12.9			
30	14.0	14.1	13.2	11.2	9.64	9.74	12.6	15.0	16.7	17.1	16.2	14.1	11.9	10.6	12.2	14.2			
35	15.5	15.7	14.5	12.1	10.0	10.12	13.1	16.3	18.3	18.7	17.4	14.9	12.2	10.9	12.9	15.2			
40	17.0	17.3	15.9	13.1	10.8	10.3	14.1	17.5	19.8	20.2	18.7	15.9	12.5	11.0	13.6	16.6			
45	18.4	18.9	17.3	14.0	11.0	11.0	14.6	18.7	21.1	21.7	19.9	16.5	12.8	11.1	14.3	17.7			
50	19.9	20.4	18.4	15.4	11.4	11.1	15.1	19.4	22.5	23.0	21.2	17.1	13.1	11.1	15.0	18.6			
55	21.1	21.8	19.9	15.7	11.9	11.2	15.7	20.2	23.6	24.4	21.8	17.9	13.1	11.0	15.5	20.0			
60	22.3	23.1	21.0	16.5	11.9	11.2	16.2	21.4	24.5	25.4	22.8	18.4	13.2	11.0	15.8	20.7			
65	23.4	24.3	21.7	17.0	12.1	11.2	16.6	22.0	25.5	26.5	24.0	19.0	13.2	11.0	16.2	21.7			
70	24.5	25.2	22.7	17.9	12.5	11.3	16.7	22.5	26.2	27.3	24.6	19.0	13.2	10.8	16.9	22.3			
75	25.4	26.3	23.4	18.5	12.7	11.3	16.9	22.9	26.8	27.6	25.0	19.0	13.2	10.6	16.9	23.2			
80	25.7	27.3	24.0	18.7	13.0	11.3	16.9	23.2	27.0	27.8	24.9	18.9	12.8	10.4	16.9	23.6			
85	26.4	27.5	24.2	18.8	13.1	11.3	16.9	23.7	27.1	27.8	24.8	18.7	12.7	10.3	16.9	23.6			
90	26.7	27.6	24.8	18.9	13.1	10.9	16.9	23.6	27.0	27.4	24.0	18.7	12.1	10.2	16.9	23.6			
95	26.8	27.7	24.7	18.9	13.2	10.7	16.9	23.3	26.3	26.9	24.0	18.1	12.0	10.12	16.7	23.3			
100	26.6	27.5	24.7	18.9	13.1	10.7	16.7	22.9	25.3	26.0	22.9	17.6	11.7	9.96	16.6	22.8			
105	26.0	27.1	24.3	18.8	12.8	10.3	16.0	22.0	24.4	24.9	21.2	16.4	11.0	9.66	16.2	22.2			
110	24.7	26.2	23.4	18.4	12.5	10.12	15.5	20.8	23.3	23.6	15.9	14.5	10.7	9.58	15.4	21.8			
115	23.9	24.8	22.5	17.4	12.2	9.74	14.5	19.9	21.4	19.4	10.7	9.69	9.71	8.97	14.8	20.4			
120	22.5	23.5	21.1	16.7	11.5	9.28	13.6	18.4	20.0	7.29	18.1	7.36	8.37	8.59	14.0	19.4			
125	21.0	21.7	19.8	15.6	10.9	8.67	12.7	17.0	18.0	16.6	16.3	11.8	5.11	7.91	12.8	18.0			
130	18.9	20.1	18.0	14.5	10.4	7.91	11.4	15.4	13.9	16.5	14.5	11.0	3.86	7.30	11.9	16.5			
135	17.0	17.9	16.5	13.1	9.64	7.38	10.25	13.5	4.54	14.5	12.9	9.55	6.15	5.54	10.48	14.7			
140	15.0	15.8	14.6	12.0	8.60	6.62	8.91	11.8	10.6	12.5	10.9	8.16	5.12	1.97	9.14	12.6			
145	13.0	13.7	12.8	10.3	7.57	5.71	7.58	9.62	10.3	10.2	9.11	6.68	4.22	3.88	7.40	10.6			
150	11.0	11.5	10.8	8.91	6.60	4.95	6.08	4.82	8.24	7.94	7.05	5.14	3.70	3.11	0.08	4.62			
155	8.75	9.34	8.75	7.28	5.41	4.04	4.73	1.97	5.71	5.75	5.06	3.60	2.29	2.05	0.00	6.07			
160	3.69	7.08	6.61	5.45	4.16	3.04	3.08	2.13	2.22	2.67	1.69	0.44	0.22	0.00	0.00	3.13			
165	0.00	0.04	0.01	0.85	0.77	0.40	0.02	0.00	0.00	0.00	0.00	0.00	0.00	0.00	0.00	0.00			
170	0.00	0.00	0.00	0.00	0.00	0.00	0.00	0.00	0.00	0.00	0.00	0.00	0.00	0.00	0.00	0.00			
175	0.00	0.00	0.00	0.00	0.00	0.00	0.00	0.00	0.00	0.00	0.00	0.00	0.00	0.00	0.00	0.00			
180	0.00	0.00	0.00	0.00	0.00	0.00	0.00	0.00	0.00	0.00	0.00	0.00	0.00	0.00	0.00	0.00			

C Range: 0 - 360DEG  
 C Interval: 22.5DEG  
 Test Speed: HIGH  
 Temperature:24.9DEG  
 Operators:Link Chai  
 Test Date:2022-07-19

☒ Range: 0 - 180DEG  
 ☒ Interval: 1.0DEG  
 Test System:EVERFINE GO-R5000\_V2 SYSTEM V2.0.366  
 Humidity:60%  
 Test Distance:26.000m [K=1.4046]  
 Remarks: