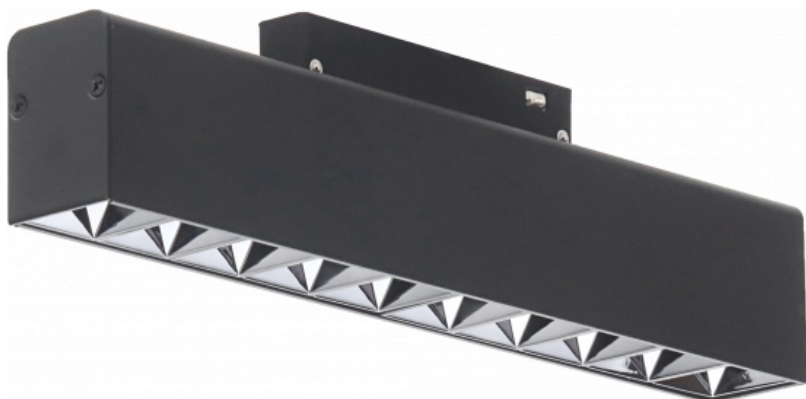


# OPTONICA



## Proiettore per binario LED Magnetico M35 20W 10 Corpo Nero - Dimmerabile

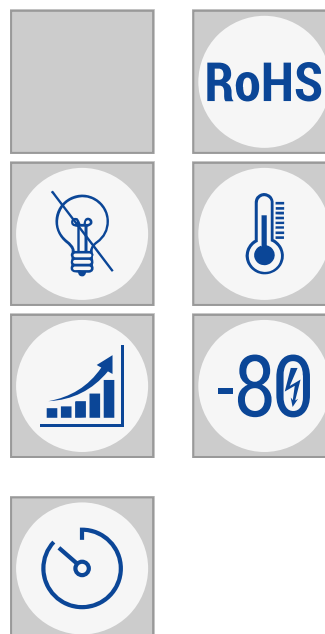
**Potenza**    **Colore della luce**

• 20W



Luce calda

### Stamps





## Specifiche tecniche

<b>Numero di catalogo</b>	5279
<b>Brand</b>	Optonica
<b>Product Code</b>	LN20-A4
<b>Power</b>	20W
<b>Energy Consumption</b>	20 kWh/1000h
<b>Input voltage</b>	DC48V
<b>Flux</b>	1600 lm
<b>FLUX per watt</b>	80 lm/W
<b>IP</b>	20
<b>Dimmable</b>	Yes
<b>Correlated Color Temperature</b>	3000K
<b>Light Color</b>	Luce calda
<b>EAN Code</b>	3800156652798
<b>Energy Efficiency Label</b>	F

<b>Beam angle</b>	24°
<b>On/Off Cycles</b>	25 000x
<b>Instant On</b>	0.1s
<b>Operating Frequency</b>	50-60 Hz
<b>Temperature</b>	-20°C / +40°C
<b>Ra ≥</b>	80
<b>Life span</b>	25 000 Hours
<b>Lumen maintenance at end of service life</b>	70%
<b>Size of product</b>	270x34x50,5mm
<b>Size of package</b>	290x73x38mm
<b>Size of Box</b>	405x335x255 mm
<b>Items per pack</b>	1
<b>Items per box</b>	30
<b>Material</b>	Plastic+ALU
<b>Color</b>	Black
<b>Certificate</b>	IP20; CE & RoHS
<b>Gross weight</b>	0,377 kg
<b>Net weight</b>	0,322 kg

**Warranty**

2 Years