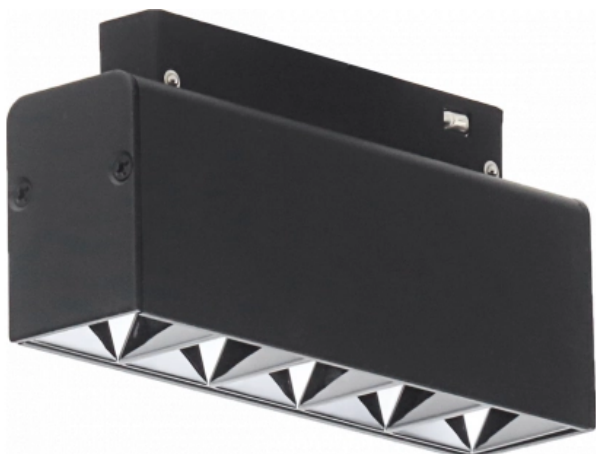


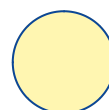
# OPTONICA



## Faro LED Magnetico M35 Binario

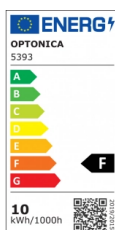
**Potenza**    **Colore della luce**

• 10W



Luce naturale

### Stamps



## Specifiche tecniche

<b>Numero di catalogo</b>	5393
<b>Brand</b>	Optonica
<b>Product Code</b>	LN10-A4
<b>Power</b>	10W
<b>Energy Consumption</b>	10 kWh/1000h
<b>Input voltage</b>	DC48V
<b>Flux</b>	800lm
<b>FLUX per watt</b>	80lm/W
<b>IP</b>	20
<b>Dimmable</b>	No
<b>Correlated Color Temperature</b>	4000K
<b>Light Color</b>	Luce naturale
<b>Wattage Equivalent</b>	60W
<b>EAN Code</b>	3800156653931
<b>Energy Efficiency Label</b>	F
<b>Beam angle</b>	24°

<b>Power LED</b>	10W
<b>On/Off Cycles</b>	100 000x
<b>Instant On</b>	0.1s
<b>Operating Frequency</b>	50Hz
<b>Temperature</b>	-20°C / +40°C
<b>Ra ≥</b>	80
<b>Life span</b>	25 000 Hours
<b>Color Code</b>	840
<b>Lumen maintenance at end of service life</b>	70%
<b>Size of product</b>	135x34x50.5
<b>Size of package</b>	155x73x38 mm
<b>Size of Box</b>	405x335x225 mm
<b>Items per pack</b>	1
<b>Items per box</b>	20
<b>Material</b>	ALU + PC
<b>Color</b>	Black
<b>Dimensions</b>	137 x 34 x 68 mm
<b>Gross weight</b>	0,221 kg

<b>Net weight</b>	0,188 kg
<b>Warranty</b>	2 Years