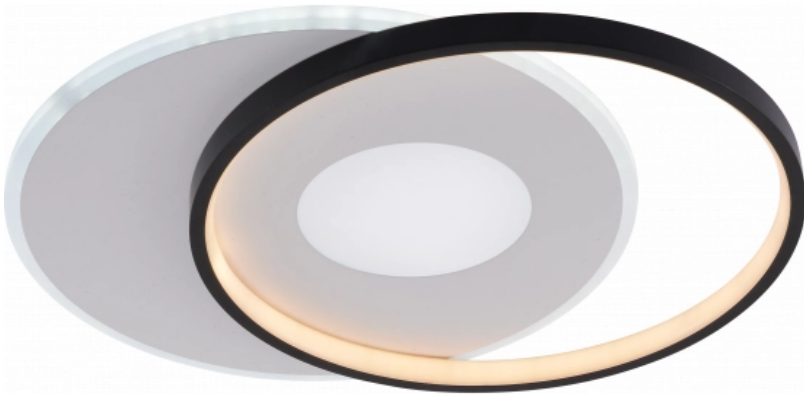


# OPTONICA

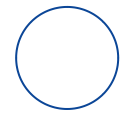


**LED Lampe De  
Plafond CCT 54W  
Blanche+Noire  
Dimmable +  
Télécommande**

**Puissance**

- 54W

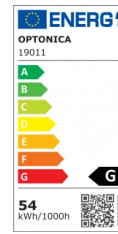
**Couleur de  
lumiere**



CCT

**Stamps**





## Technical Specification

|                                     |               |
|-------------------------------------|---------------|
| <b>Reference catalogue</b>          | 19011         |
| <b>Brand</b>                        | Optonica      |
| <b>Product Code</b>                 | PD54-A3       |
| <b>Power</b>                        | 54W           |
| <b>Energy Consumption</b>           | 54 kWh/1000h  |
| <b>Input voltage</b>                | AC220-240V    |
| <b>Flux</b>                         | 4120 lm       |
| <b>FLUX per watt</b>                | 76 lm/W       |
| <b>IP</b>                           | 20            |
| <b>Dimmable</b>                     | Yes           |
| <b>Correlated Color Temperature</b> | 3000K-6000K   |
| <b>Light Color</b>                  | CCT           |
| <b>EAN Code</b>                     | 3801057190112 |
| <b>Energy Efficiency Label</b>      | G             |

|   |                 |
|---|-----------------|
| <b>Beam angle</b>                               | 180°            |
| <b>On/Off Cycles</b>                            | 25 000x         |
| <b>Instant On</b>                               | 0.1s            |
| <b>Material</b>                                 | Iron + ALU + PS |
| <b>Operating Frequency</b>                      | 50-60 Hz        |
| <b>Temperature</b>                              | -20°C / +40°C   |
| <b>Ra ≥</b>                                     | 80              |
| <b>Life span</b>                                | 25 000 Hours    |
| <b>Lumen maintenance at end of service life</b> | 70%             |
| <b>Size of product</b>                          | 460x370x45 mm   |
| <b>Items per pack</b>                           | 1               |
| <b>Items per box</b>                            | 5               |
| <b>Color Of The Shell</b>                       | White + Black   |
| <b>Remote Control</b>                           | Yes             |
| <b>Gross weight</b>                             | 2,000 kg        |
| <b>Net weight</b>                               | 1,450 kg        |
| <b>Warranty</b>                                 | 2 Years         |