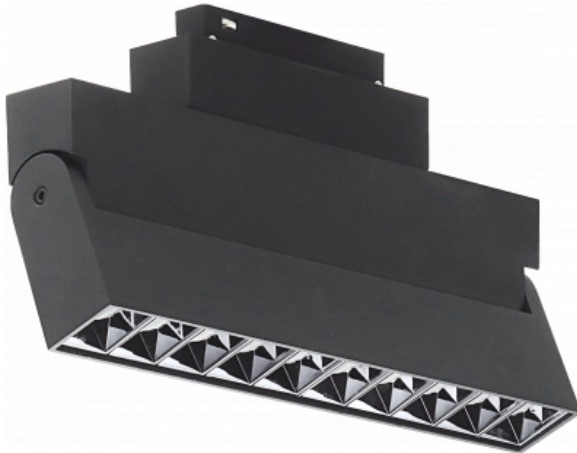


# OPTONICA



## LED Magnetic Folding 10-Heads

**Power**    **Light color**

- 20W



Neutral white

## Stamps



# Technical Specification

|                                     |               |
|-------------------------------------|---------------|
| <b>Catalog Number</b>               | 5399          |
| <b>Brand</b>                        | Optonica      |
| <b>Product Code</b>                 | LN20-A4       |
| <b>Power</b>                        | 20W           |
| <b>Energy Consumption</b>           | 20 kWh/1000h  |
| <b>Input voltage</b>                | DC48V         |
| <b>Flux</b>                         | 1600 lm       |
| <b>FLUX per watt</b>                | 80lm/W        |
| <b>IP</b>                           | 20            |
| <b>Dimmable</b>                     | No            |
| <b>Correlated Color Temperature</b> | 4000K         |
| <b>Light Color</b>                  | Neutral white |
| <b>Wattage Equivalent</b>           | 100W          |
| <b>EAN Code</b>                     | 3800156653993 |
| <b>Energy Efficiency Label</b>      | F             |
| <b>Beam angle</b>                   | 24°           |

|   |                |
|---|----------------|
| <b>Power LED</b>                                | 20W            |
| <b>On/Off Cycles</b>                            | 100 000x       |
| <b>Instant On</b>                               | 0.1s           |
| <b>Material</b>                                 | ALU+PC         |
| <b>Operating Frequency</b>                      | 50Hz           |
| <b>Temperature</b>                              | -20°C / +40°C  |
| <b>Ra ≥</b>                                     | 90             |
| <b>Life span</b>                                | 25 000 Hours   |
| <b>Color Code</b>                               | 840            |
| <b>Lumen maintenance at end of service life</b> | 70%            |
| <b>Size of product</b>                          | 270x34x95 mm   |
| <b>Size of package</b>                          | 285x155x38 mm  |
| <b>Size of Box</b>                              | 410x325x335 mm |
| <b>Items per pack</b>                           | 1              |
| <b>Items per box</b>                            | 20             |
| <b>Gross weight</b>                             | 0,833 kg       |
| <b>Net weight</b>                               | 0,757 kg       |
| <b>Warranty</b>                                 | 2 Years        |