

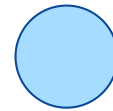
# OPTONICA



## LED Street Light With NEMA Socket And Photocell Bridgelux3030 Dimmable

**Power**   **Light color**

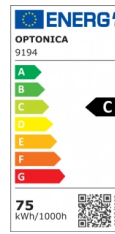
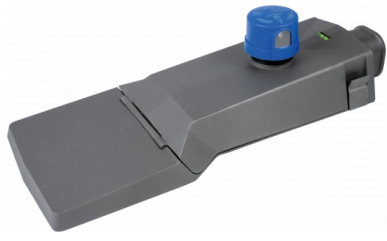
- 75W



White light

### Stamps





## Technical Specification

|                                     |               |
|-------------------------------------|---------------|
| <b>Catalog Number</b>               | 9194          |
| <b>Brand</b>                        | Optonica      |
| <b>Product Code</b>                 | SL75-A4       |
| <b>Socket</b>                       | NEMA          |
| <b>Power</b>                        | 75W           |
| <b>Energy Consumption</b>           | 75 kWh/1000h  |
| <b>Input voltage</b>                | AC100-240V    |
| <b>Flux</b>                         | 10500 lm      |
| <b>FLUX per watt</b>                | 140lm/W       |
| <b>IP</b>                           | 66            |
| <b>Dimmable</b>                     | Yes           |
| <b>Correlated Color Temperature</b> | 6000K         |
| <b>Light Color</b>                  | White light   |
| <b>EAN Code</b>                     | 3800156691940 |

|   |                |
|---|----------------|
| <b>Energy Efficiency Label</b>                  | C              |
| <b>Beam angle</b>                               | 120°           |
| <b>Hole Size</b>                                | Ø65 mm         |
| <b>Power Factor</b>                             | 0.95           |
| <b>On/Off Cycles</b>                            | 35 000x        |
| <b>Instant On</b>                               | 0.1s           |
| <b>Material</b>                                 | Aluminium      |
| <b>Operating Frequency</b>                      | 50-60 Hz       |
| <b>Temperature</b>                              | -20°C / +40°C  |
| <b>Ra ≥</b>                                     | 70             |
| <b>Life span</b>                                | 50 000 Hours   |
| <b>Color Code</b>                               | 857            |
| <b>LED Type</b>                                 | Bridgelux      |
| <b>Lumen maintenance at end of service life</b> | 70%            |
| <b>Size of product</b>                          | 545x245x180 mm |
| <b>Size of package</b>                          | 580x280x200 mm |
| <b>Items per pack</b>                           | 1              |
| <b>Items per box</b>                            | 1              |

|                      |          |
|----------------------|----------|
| <b>Rated Current</b> | 0.375A   |
| <b>Gross weight</b>  | 5,700 kg |
| <b>Net weight</b>    | 5,000 kg |
| <b>Warranty</b>      | 5 Years  |